

A Stranded Shawl by the name 'Mrs. Barista' by Pinneguri



After knitting some lace shawls I got the idea to make a shawl in a technique I felt as a Norwegian more comfortable with, stranded knitting. And instantly met the problem with stranded knitting on the wrong side, the purl side. I knew from earlier experience with Kaffe Fassett-patterns that knitting back and forth was really not my kind of knitting.

But it was also Fassett's knitting that brought me to the idea: He has made some shawls, how did he do that? And looking at one of his beautiful shawls I remember asking myself, why didn't he knit in the round, and cut it open instead?

Steeking (to make some extra stitches and cut it open later) is very common in Norwegian knitting; we do it all the time when knitting cardigans. Thinking it would be worthwhile to at least try it, and as I got a lot of cheering on Ravelry, made me continue.

A Stranded Shawl by the name 'Mrs. Barista' by Pinneguri

I hope you - like me - will find it easier and less scary than you might think just now :)

Yarn

I have used Wollmeise Sock Yarn 100% Merino, but why not be adventurous and use Kauni/ Evilla, Finull, Sundara, or what you have already stashed?

The shawl on the picture weights about 510 gram.

As this is a shawl and you might knit the size of your heart's desire I don't think gauge is an issue.

Needles

I have used needles 2,5 mm (0 US). Because I start the pattern very quickly I chose to use double pointed needles (DPN) at the beginning to make it easier to knit in the round. You don't have to knit much before you can change to a small circular needle. You'll need at least a couple of different cable length as you go on.

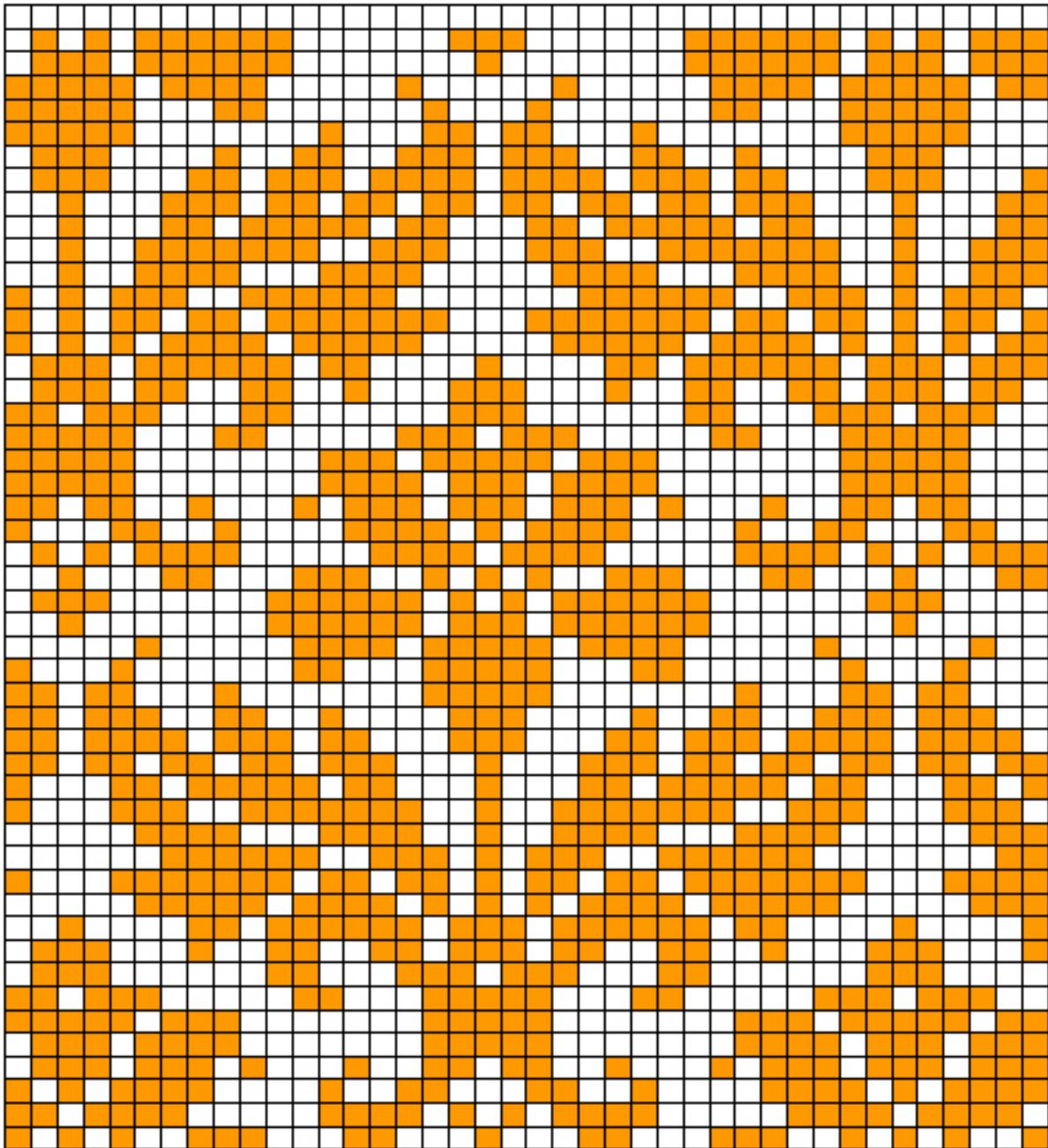
The start

Cast on 21 stitches on needles 2,5 mm on 2 needles.

- row 1: K (knit)
- row 2: P (purl)
- row 3: P4, k13, p4
- row 4: K4, p13, k4
- row 5: Start to increase on every right side, the pattern being p4, k2, increase 1, knit until 2 st left, increase 1, k2, p4.
- row 6: k4, p15/17/19/21 etc, k4.
- row 7: Now is a good point to start to knit in the round, bring on the other DPN's. Continue to p8 over the 4+4 purls (the steek), continue to increase every other row (on the right side) after the first two st and before the last 2 st. Start the pattern at any point, lets say about the 10th row.

Here is the chart of the flower. I can't promise full perfection, please bear that in mind. If you find something wrong, please, please let me know.

A Stranded Shawl by the name 'Mrs. Barista' by Pinneguri



The Main Part and Placing the Pattern

Continue knitting in the round. Change from DPN's to a circular needle when needed, change to a larger circular needle when that will be needed later.

Continue to increase 2 stitches on every row until the top of the last row of the last repeat: 1 st after the 2 first stitches, and increase 1 st 2 st before the last (and consider the 8 purl stitches in between as non-stitches).

A Stranded Shawl by the name 'Mrs. Barista' by Pinneguri

When you start the pattern try to keep the pattern 4-5 stitches from the beginning and the end. Start the pattern 4-5 stitches from the beginning, and end the pattern 4-5 stitches from the end.

Start by placing the pattern centre on your knitting.

Continue to knit the pattern, in the round, increasing 2 st on every right side row.

Preparing for the top most part

When you decide that the shawl is large enough for you, you are to prepare for the ending. At the top we need to bind off some stitches so the topmost end wont curl downwards when you are using it.

This is the way to do that: At the last row of the pattern, decrease 1 stitch in between the flowers. Which make 1 stitch less about every 29th stitch. Knit one row in the main colour, no decreases in this row. Next row, decrease 1 stitch over every flower, in the middle. That way you wont decrease over the same place as two rows ago. So this time you will decrease 1 stitch about every 28th stitch.

Knit another row in the main colour, no decreasing at this row either.

The Top Pattern and edge

Now you will start the last pattern, the stripes that will make the end. Start the pattern with 2 st in the main colour, 2 st in the contrast colour, and at the same time, on this the first row, decrease about every 16 stitch. Continue knitting the end pattern for about 10 rows or as long as you want it.

This part will be turned when finished, and sewn on the backside, see picture. So when it is long enough for your liking, bind off, and cut a long tail of the yarn. That long tail you can use to sew it on.

I prefer to turn and sew the topmost edge now, but you can choose to do this later when you have finished the other two edges on the sides.

Anyway you'll use the same method on all three edges: you fold the knitted edge in the middle and sew it on on the backside into the binded off stitches.

The Side Edges

Now to the two edges on the sides. With a thin round needle pick up the stitches from one side of the steeking. As we have 2 knitted stitches between the steeking and the increasing stitch you can use either of these. Since the yarn Wollmeise is a bit slick I prefer to pick up the far most stitch away from the steeking seam to be sure the stitches wont come loose when cutting in a minute, and if the stitches unravel there will be some room for helping

A Stranded Shawl by the name 'Mrs. Barista' by Pinneguri

them placed back again.

With your ordinary round needle (in this case, 2,5 mm) you knit off the smaller needle on the first round, and when coming to the end of the needle you cast on 7 new stitches which will be the steeking seam of this edge. Knit in the round, 2 in the ground colour, 2 in the contrast colour in the same way as you knitted the topmost edge. Bind off after 10-12 rows. The corner where you started the shawl you'll have to improvise a little. What I do is that I increase 2 stitches on either side of the corner every other row until about the middle of the edge, and then I decrease on the same places on the other side to get a out/in form when folding the edge later. If you have sewn corners earlier you know what I mean?

If you don't do nothing the corner will be a little tight when sewn on to the backside, but I wouldn't worry too much on this detail. Mine are never perfect and I have never heard anyone mentioned that :) If you find a good way to do this, please do come back and tell?

Now your shawl will look very weird because the first edge is knitted in the round and make the shawl turn around. Don't be scared, everything will be fine in the end :D

Pick up and knit in the same way, the second side edge.

The Steeking and Cutting

There are two types of sewing involved now. Sewing on the edges, which you'll do with a needle and wolleise yarn, and the steeking, which at least I prefer to do on a sewing machine. And that is what happens first: Sew two seams in the middle of the steeking with a couple of knitted stitches in between, on all the three steekings you have.



And then, the scary part: Cutting the three seams! I prefer to do this process in one going: Cut and sew on the edges immediately after. I cut, use pins to fold the side edges and then sew, hiding the cut steeking.

Eunny Jang calls this way of steeking Norwegian, and [here](#) you will see very good pictures of the method.

Finishing

Another Norwegian particularity is that we don't block our knitting, we dampen it lightly with an iron.

By now you should actually have finished the shawl. Have you? Is there something I have

A Stranded Shawl by the name 'Mrs. Barista' by Pinneguri

forgot to write, something you still wonder about? Please don't hesitate to ask me, or correct my English where it's not very helpful or good: theneedlelady@gmail.com

If you need more pictures, go to [flickr.com](https://www.flickr.com) and search for "barista" or google it.

Thank you's

This shawl, 'Mrs. Barista', is named after the yarn Barista by Claudia at Wollmeise.

The Thistle flower was given to me for use very generously by the Norwegian **yarn factory Dale**.

You as a knitter might do whatever you want to do with this pattern: reproduce, knit hundred of shawls and sell them dearly, or even burn it. Knitting is a common gift, and if you consider this to be a gift from me, so much richer for me ☺