

The Lotus Top

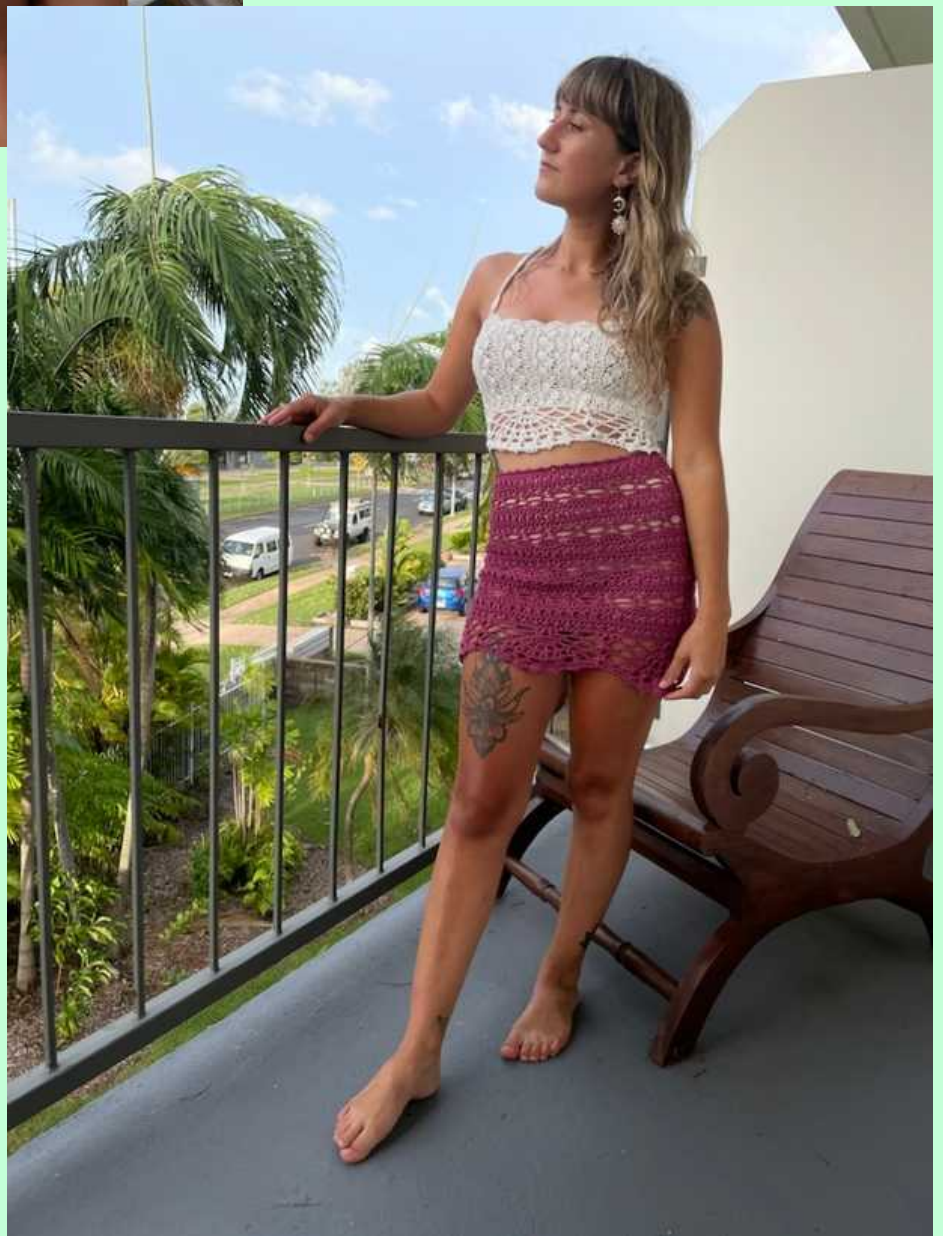
Pattern designed and created by Alanna Miall

Instagram: [crochetwithalannamiall](https://www.instagram.com/crochetwithalannamiall)

Weblinks: www.hippydaze.com

You may post this design on social media and sell the items you make from it, however always tag me as the designer and please do not change the name of the design. It is copyright infringement if you sell this design as your own.





Materials:

- 180m of any 4ply fingering weight cotton yarn for size XS (UK 6).
- 3.5mm crochet hook
- Tapestry needle
- Scissors
- Tape measure
- Stitch markers

Abbreviations: US terminology

- FSC - Foundation Single crochet - Please see step 1 for how you do this. A FSC is better for working out size, especially if you are a tight crocheter. It brings the CH and the 1st row of SC together into 1 stitch/chain.
- CH - Chain
- YO - Yarn over
- SK - Skip
- SC - Single crochet
- HDC - Half double crochet
- DC - Double crochet
- Shell stitch - 5 DC into the same stitch
- V-stitch - 1 DC, CH 1, 1 DC into the same stitch.
- Unfinished DC - YO, insert hook, pull up a loop, 3 loops on the hook, YO, pull through 2 loops only.
- 3 DC cluster - 3 unfinished DC into the same stitch, 4 loops on hook, YO, pull through all loops.
- Puff stitch - YO, insert hook into stitch, YO, pull up a loop x3, should have 7 loops on the hook, YO and go through 6 loops, YO over and go through the last 2 loops to finish the stitch.
- Picot stitch - CH 2, SL ST into the top of the stitch that sits below.
- Large picot stitch - CH 3, SL ST into the top of the stitch that sits below.
- The scalloped lace edging - The 6-row repeat for the bottom of top.

Level:

Advanced beginner

Size:

This sample size will fit a size extra small (UK 6), but is easily customizable.

You will need to take this measurements:

- Bust minus 8 inches
- Above breasts to where you would like the top to sit minus 3.5 inches (the scalloped lace edging).

Pattern notes:

- The CH 3 always counts as the 1st DC throughout the pattern.
- The CH 1 never counts as a stitch.
- Back loop HDC - this means you place your HDC into only 1 loop of the stitch that sits below (back loop).
- This design works sideways and not top down, this means your beginning CH needs to be the measurement from above breasts to length of top before starting the scalloped lace edging (3.5 inches). You repeat until you get the measurement of your bust minus 8 inches (for the corset back).
- The stitch pattern works with a multiple of 6 + 1 and is a 4-row repeat.
- The scalloped lace edging works with a multiple of 24+1 and is 6 rows long that measures 3.5 inches/9cm in length.
- 24 is a large multiple, so I have provided a pattern gauge swatch and a sizing guide (page 7) to help guide you with working out how many repeats you will need.

Pattern Gauge

Create FSC of 19 (see step 1 if you do not know how to create a FSC).

Row 1: CH 1 (never counts as a stitch), turn work, 1 HDC into each stitch across (19 HDC).

Row 2: CH 1, turn work and place 1 HDC into the back loop only of the 1st stitch, repeat placing 1 HDC through the back loop of each stitch across (19 HDC).

Row 3: CH 1, turn work, 1 SC into the 1st stitch, *SK 2, 1 shell stitch, SK 2, 1 SC* repeat ** across and place 1 SC into the last stitch (19 stitches).

Row 4: CH 3 (1st DC throughout), turn work, place 2 more DC into the 1st stitch (3 DC), *SK 2, 1 SC, SK 2, 1 shell stitch* repeat ** across the row and place 3 DC into the last stitch (19 stitches).

Repeat rows 1-4 again until you have 8 rows/2 repeats.

- 8 rows/2 repeats of the patter = 3.5 inches/9cm in length (without blocking).
- 19 stitches across in the rows = 4 inches/10cm in width (without blocking).



Pattern Gauge

CH 25 (24+1), 1 repeat of the lace scalloped edging pattern is 24 stitches across.

Repeat steps 8-13 for swatch.

This step is optional, however it may help guide you with how many SC you will need to place at the bottom of your top. You can measure the width of this swatch and compare it the length of your top panel (bust measurement -8 inches).

- **25 stitches across/1 repeat of the lace pattern = 6.5 inches/16.5cm in width (this is without blocking)**
- **6 rows of the pattern = 3.5 inches/9cm in length (without blocking).**



Tips and tricks for changing your gauge:

Keep in mind that the gauge is not essential as the design is made to measure. However if you do not match gauge, the yarn amount may differ.

- If you find your swatch pattern is larger, then reduce your hook size.
- If your find your swatch pattern is smaller, then increase your hook size.
- Make sure your yarn weight is the same as mine.
- When measuring your gauge, make sure you do not stretch the yarn.

Step 1: Setup round

Create a FSC that is a multiple of 6 + 1 and fits your measurements from above your breasts to where you would like the top to sit on your waist minus the 3.5 inches (the scalloped lace edging).

For the sample size, I created a FSC of 37 (multiple of 6+ 1) for my desired measurement from above breasts to upper waist.

See below if you do not know how to create a FSC:

CH 2, insert your hook in the 2nd CH from hook, pull up a loop, YO, draw through 1 loop (this will be the CH). YO, draw through 2 loops left on the hook (this is the SC). *insert your hook under the 2 loops of the CH stitch you created on the last stitch and pull up a loop, YO, draw through 1 loop (2nd CH), YO over and draw through the last 2 loops on the hook (this is your 2nd SC), repeat ** until the number of FSC you need.

Step 2:

1st row of repeat

Wrong side facing up

CH 1 (never counts as a stitch) and turn your work, place 1 HDC into each stitch across (37 HDC).



Step 3:

2nd row of repeat

Right side facing up

CH 1, turn your work and place 1 HDC into the back loop only of the 1st stitch. Repeat placing 1 HDC into each back loop stitch across (37 HDC).



Step 4:

3rd row of repeat

Wrong side facing up

CH 1, turn your work and place 1 SC into the 1st stitch. *SK 2, shell stitch, SK 2, 1 SC* repeat ** across and place 1 SC into last stitch (37 stitches).



Step 5:

4th row of repeat

Right way facing up

CH 3 (always counts as 1st DC) and turn your work, place 2 DC into the 1st stitch (3 DC), *SK 2, 1 SC, SK 2, shell stitch* repeat across, and place 3 DC into the last stitch (37 stitches).



Step 6:

Repeating

Repeat steps 2-5 until desired length of your bust measurement minus 8 inches and finish your last row on row 2 of the repeat (step 3) and do not cut off your yarn.

Tip: the stitch pattern has some stretch to it, so make sure to check for size as you go.

For the sample size, I created 46 rows of the repeat, ending on row 2 (step 3). This met 21 inches in length and 23 inches once stretched and my bust measurement is 31 inches.



Step 7:

Setup row for scalloped lace edging

Right side facing up

CH 1 and turn your work so you are now facing the long side of your top panel (bottom of your top and right side facing up). Place 1 SC into the 1st available space and repeat placing 1 SC across the bottom into each available space, you need to make sure that you place a multiple of 24 + 1 SC for the lace repeat to work.

24 is a large multiple, so I have added a guide on how many SC you should add for different bust sizes.

- (28-32 inch bust) = 73 SC
- (33-37 bust) = 97 SC
- (38-44 bust) = 121 SC
- (45 -50 bust) = 145 SC
- (51-55 bust) = 169 SC
- (56 -60 bust) = 193 SC

Please note this is just a guide of the SC amount you should aim for, or you can create the gauge swatch (page 4) for the 1 repeat (24 + 1 stitches) and work out how many SC you would need from that measurement.

You may notice that you need to add a couple extra SC or even create a couple of SC decreases to reach this amount.

- Adding extra SC = placing 2 SC into 1 stitch instead of 1.
- Removing SC (SC decrease) = Insert hook into the 1st stitch, YO, pull up a loop, insert hook into the 2nd stitch, YO, pull up a loop, 3 loops on hook, YO and pull through all loops, this making 2 stitches into 1.

For the sample size, I created 73 SC across and I placed a couple of SC decreases to reach this amount.



Step 8:

1st row of repeat

Wrong side facing up

CH 4 (1st DC + CH 1), and turn your work, place a puff stitch into the 1st stitch. *SK 1, 1 SC, CH 5, SK 3, 1 SC, CH 5, SK 3, 1 SC, SK 1, and into the next stitch, place 1 puff stitch, CH 3, 1 puff stitch* repeat ** across the row. At the end of the row, place 1 puff stitch, CH 1 and 1 DC into the last stitch.



Step 9:

2nd row of repeat

Right side facing up

CH 1 (never counts as stitch) and turn your work, 1 SC into the 1st stitch, CH 5, 1 SC into the CH 5 space, CH 5, 1 SC into the next CH 5 space. *CH 1, 6 DC into the CH 3 space, CH 1, 1 SC into the next CH 5 space, CH 5, 1 SC into the next CH 5 space, CH 5, 1 SC into the CH 3 space, CH 5, 1 SC into the next CH 5 space, CH 5, 1 SC into the next CH 5 space* repeat ** across the row.

At the end, CH 5 and place 1 SC into the last stitch (3rd CH up on the CH 4).



Step 10:

3rd row of repeat

Wrong side facing up

CH 4 (1st DC + CH 1) and turn your work, 1 puff stitch into the 1st stitch, 1 SC into the CH 5 space, CH 5, 1 SC into the next CH 5 space, *CH 2, [1 DC, CH 2] x6, 1 SC into the CH 5 space, CH 5, 1 SC into the next CH 5 space, place 1 puff stitch, CH 3, 1 puff stitch into the top of the SC, 1 SC into the next CH 5 space, CH 5, 1 SC into the next CH 5 space* repeat ** across the row. At the end of the row, place 1 DC, CH 1 and 1 puff stitch into the last stitch.



Step 11:

4th row of repeat

Right side facing up

CH 1, turn your work, 1 SC into the 1st stitch, CH 5, 1 SC into the CH 5 space, *CH 1, [1 v-stitch, CH 1]x6, 1 SC into the CH 5 space, CH 5, 1 SC into the CH 3 space, CH 5, 1 SC into the CH 5 space* repeat ** across the row. At the end, CH 5 and place 1 SC into the last stitch (3rd CH up on the CH 4).



Step 12:

5th row of repeat

Wrong side facing up

CH 4 (1st DC + CH 4), turn your work, 1 puff stitch into the 1st stitch, 1 SC into the CH 5 space, *CH 3, [1 DC cluster into the CH 1 (between v-stitch), CH 3]x 6, 1 SC into the CH 5 space, place 1 puff stitch, CH 3, 1 puff stitch into the CH 3 space, 1 SC into the Ch 5 space* repeat ** across the row. At the end, place 1 puff stitch, CH 1, 1 DC into the last stitch.



Step 13:

6th row of repeat

Right way facing out

CH 1, turn your work, 1 SC into the 1st stitch, *3 DC into the 1st CH 3 space, [3 DC, 1 picot stitch, 2 DC] x 2 (next 2 CH 3 spaces), SK to next CH 3 space and place 2 DC, 1 picot stitch, 1 DC, 1 large picot stitch, 1 DC, 1 picot stitch, 1 DC. SK to the next CH 3 space and repeat [] x 2 (next 2 CH 3 spaces), SK to the next CH 3 space and place 3 DC, SK to the next CH 3 space (between puff stitches) and place 1 SC* repeat ** across the row. At the end of the row, place 1 SC into the last stitch (3rd CH up on CH 4) and cut and tie off your yarn.



Step 14: Setup for straps

Try the top panel on and mark with a stitch marker on each side of the panel where you would like your front straps to start on the front of your top.

For the sample size, I placed my stitch markers 14 rows in on each side of the top.



Step 15: Straps

Join your yarn into the stitch marker on the left (right side of top facing up) and create a CH that is long enough to fit over your shoulders and join to the top of the last stitch on the end of the left side of the panel (see pictures below). SL ST your CH to join and SL ST into the stitch that sits to the left, CH 1, turn your work so the CH you created is now facing you and place 1 SC into each CH across until you meet the stitch marker. Once you meet the stitch marker, place a SL ST into that stitch to join the strap and cut and tie off your yarn.

Do the same to the other strap until you have 2 identical.

For the sample size, I created a CH of 48 for each strap.





Step 16:
Setup for shell edging

Mark the top/middle of your straps with a stitch marker (see picture below).

For the sample size, I marked mine 24 stitches up.



Step 17: Shell edging

When working your stitches into the side of the scalloped lace edging and the front section of the top (between front straps), you will be placing your stitches into the sides of the previous stitches rather than on top. You need to place stitches into any available spaces you find, a good rule is to place 2 SC into each side HDC and DC and 1 SC into each side SC.

Join your yarn (right side facing up) to the bottom left corner of your top (side of the scalloped lace stitch). CH 1 and place 1 SC into the 1st stitch, [*SK 2 and place 3 DC, CH 1, 3 DC into the next stitch, SK 2, 1 SC*] repeat [**] this pattern into each stitch across the side of your top until you meet the stitch marker. Once you meet the stitch marker, place 1 SC into that stitch. *SK 2, shell stitch, SK 2, 1 SC* repeat ** across for the rest of the strap, across the front of the top, and up the other strap until the other stitch marker. Once you reach the other stitch marker, place 1 SC into that stitch and repeat [**] until the end of the other side of the top, place 1 SC into the last stitch and cut and tie off your yarn (see all pictures below and on the next page).





Step 18:

Back strap

Create a CH that is long enough to go in and out of every 2nd shell stitch on each side of the back of your top. Once completed, starting from the middle of your straps (where the stitch markers were placed), thread that CH in and out of the CH 1 spaces (between the shells), making sure to place the CH into the last CH 1 spaces of the last shells on each side of your top and tie into a bow (see all pictures).

Sew in all your ends and this has finished your new top.



Thank you!



Thank you so much for choosing my pattern and supporting my brand. I hope you have enjoyed this pattern and if you would like to see more of my patterns, follow my Instagram page for regular updates and check my website for further social media links.

If you had any issues with this pattern, please do not hesitate to contact me via email or social media.

Please remember to tag me in your social media posts as I love seeing your interpretations of my design!

Thank you!

Instagram: [crochetwithalannamiall](#)

Website: www.hippydaze.com

Email: Hippydazecrochet@outlook.com