

The Lonely Tree Shawl

(leaves & lace & autumn tweed)



Another leaf shawl?

Yep. Because I decided that Ravelry just didn't have enough of them.

Savanna (my lovely model) helped me decide to publish this pattern (which I designed originally not for Ravelry, but for an art show in which my knitted things will be shown). It just looked so amazing on her I wanted to share it! Also, all the leaves had just fallen and the trees were so lonely.

They needed a nice leaves shawl to keep them company!

So even though there are like twenty shawls similar to this one on Ravelry this one has some features that might make it more appealing to you.

1) the photos are beautiful!

2) It's free!

This shawl would be best knit by folk who are already comfortable with knitting basic repeating lace. The lace isn't hard, but if you mess up it will show. No fudging this one.

What you'll need:

3 balls of Loden or 360 yards (330 meters) of worsted weight yarn.

1 pair of 5mm needles.

Casting on:

Cast on 3 stitches. Knit 6 rows. Pick up 3 stitches along the long edge and 2 stitches along the cast-on edge of your tiny knitted thing. You should have a little U of fabric and 8 stitches on your needle.



Off the charts

Before you start knitting you must know a few things about these charts.

They don't show wrong side (WS) rows. ALL wrong side rows are worked as follows:

k2, purl until last 2 stitches, k2.

All right side rows (which are the ones that are charted) are worked as follows:

k2, work the appropriate row on the chart, k2, work that same row from the chart again, k2.

Those k2s are the side borders and the middle border.

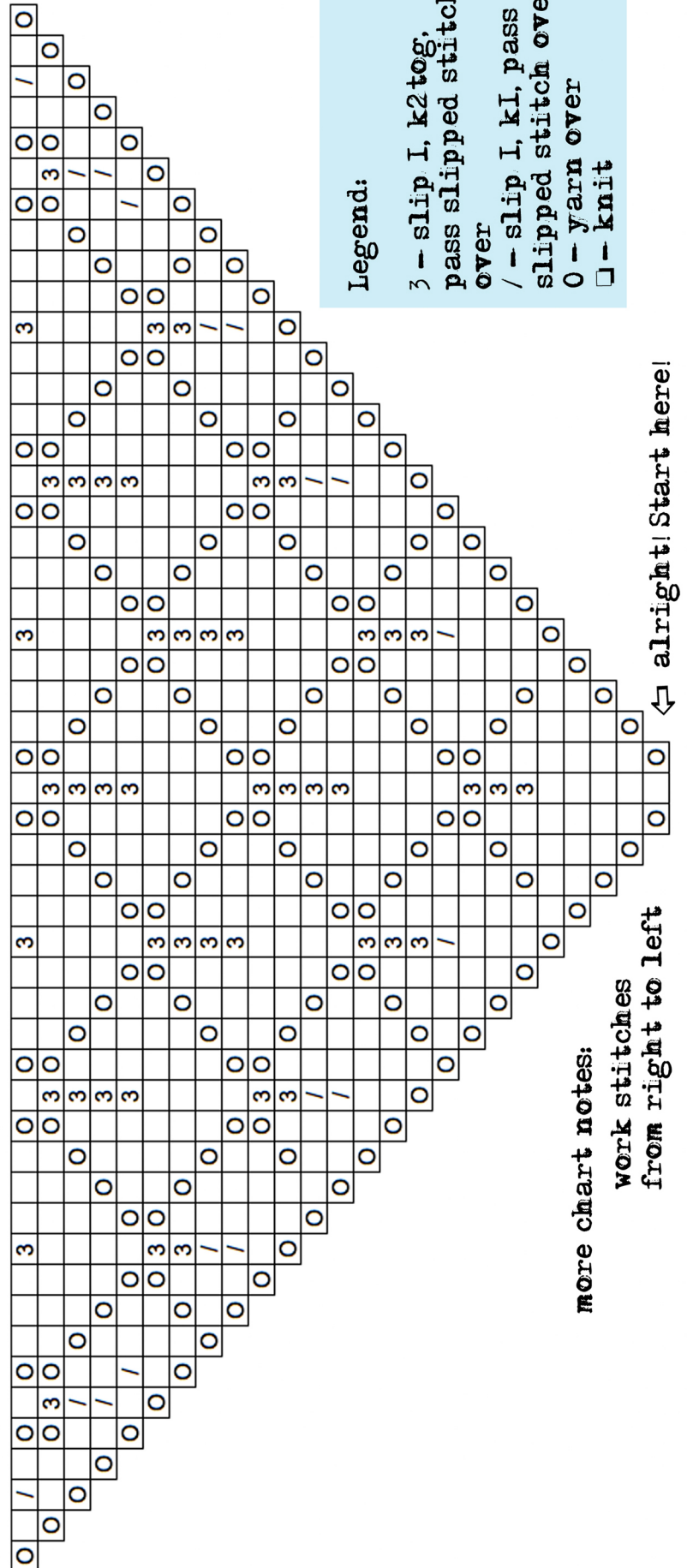
All charts are worked from bottom right to top left. Each row is read from right to left.

Knit Chart A, B and then C!



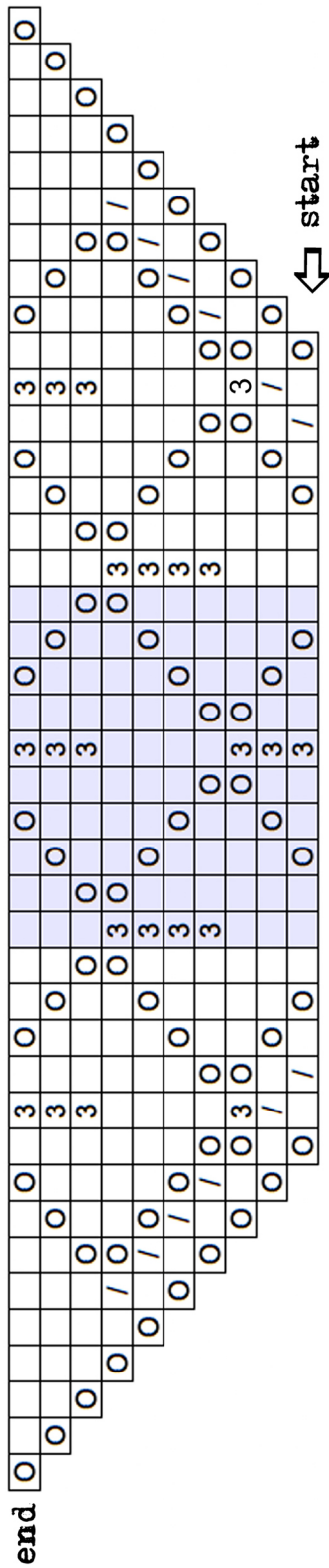
pattern by softsweater

Chart A



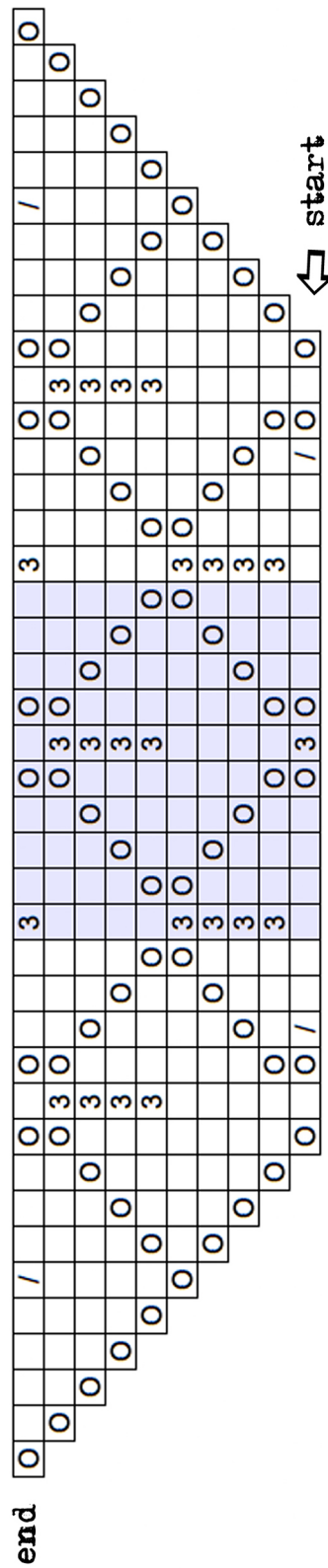
For Chart B repeat shaded in stitches 3 times for a total of 4 repeats

Chart B



For Chart C repeat shaded stitches 5 times for a total of 6 repeats

Chart C



Yay! You re almost done!

**Done knitting your 3 charts?
Let's cast that shit off then!**



wait, before you cast off...

Before you cast off, you'll need to knit eight rows of garter. That means knitting every row for eight rows.

The picot cast off method:

*Cast on 2 stitches using the knitted cast on method
Cast off 6 stitches * repeat all things from * to * until all stitches have been cast off.

Happy Knitting!

Please check out my blog www.softsweaterfibres.blogspot.com!
I work at Baaad Anna's Yarn Store (baaadannas.ca) my Local Yarn Store. Come visit me and buy lovely yarns!

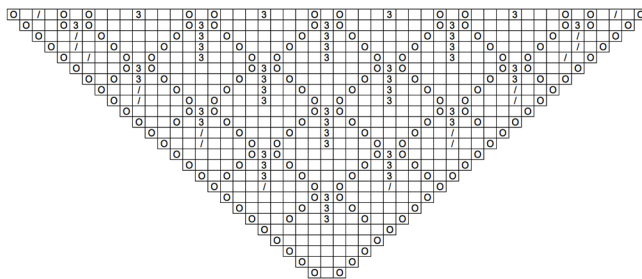
If you have any questions please contact me on ravelry.com. You can find me on there as softsweater.

Also thank you to Nicola (woolcamera on ravelry) for test knitting and proofing!

A really basic, poorly drawn explanation of how charts and triangle shawls fit together.

this is Chart A. By itself it doesn't make a triangle shawl (even though it looks like it could because it's a triangle.) It's only half of the triangle shawl puzzle. To get the full shawl you need to repeat the chart twice.

Chart A.

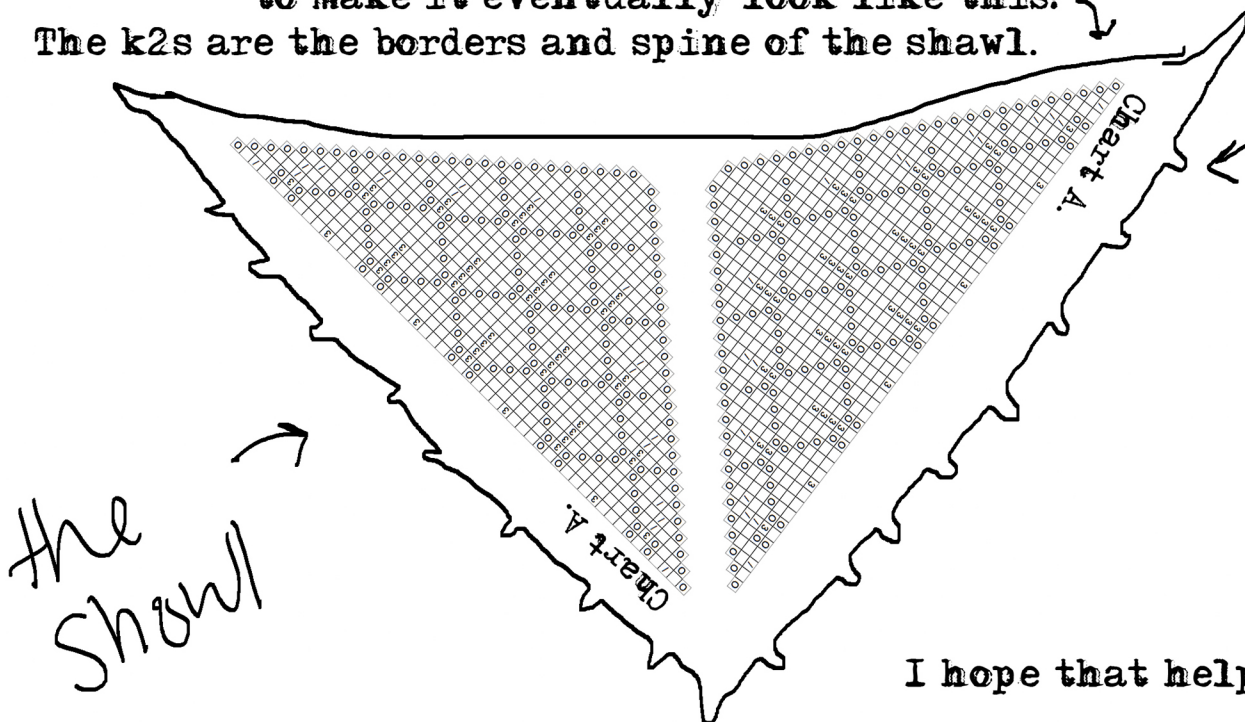


So earlier in the pattern when I say all right side rows are worked like this:

k2, row of chart, k2, that same row of chart again, k2

I'm getting you to knit the relevant row on the chart twice to make it eventually look like this:

The k2s are the borders and spine of the shawl.



I hope that helps!!!

please feel free to contact me with any other questions :)