



Tiina Lilleaed

Yarn:

Any lace yarn with measurements from 100 grams / 600 metres to 100 grams / 1400 metres. I used yarn 100 g/700 m.

Needles:

Suitable for Your own knitting density. I used 3,5mm and 4,0mm

NB!

This shawl is knitted down to bottom. The shawl has 2 edgestitches, knitted in garter and one middle stitch, which is knitted on right side and purled on wrong side of work.

There are only rightside rows shown on charts. After the middle stitch knit the same row again in reflection.

Beginning:

1. style:

Cast-on 2 stitches ja knit 6 rows

7.row – knit 2, turn work 90* and gather 3 stitches from the edge, turn 90* and gather 2 stitches from the 2 stitches You casted-on = 7 stitches.

Turn the work (wrong side row) knit 2, purl 3, knit 2.

Begin with 1. chart.

2.style:

Cast-on 5 stitches ja knit 2 rows (in garter)

3.row – knit 2 (edgestitches), yarn over, knit 1 (middle stitch), yo, k2.

4.row - knit 2, purl 3, knit 2 = 7 stitches

Begin with 1. chart.

Symbols:

X - middle stitch

|||| - edgestitch

□ - knit

○ - yarn over

↘ - slip 1 as if to knit, knit 1, pass slipped stitch over

↘ - knit 2 together

↗ - knit 3 together

↗ - slip 2 together as if to knit, knit next, pass 2 slipped stitches over

● - nupp (button or bobble): knit 7-11 stitches out of one (k, yo, k, yo, k, yo, k, yo, k) purl all stitches together on wrong side

√ - knit 2 stitches from 1

Chart 1 "Beginning": knit rows 1 – 32 once

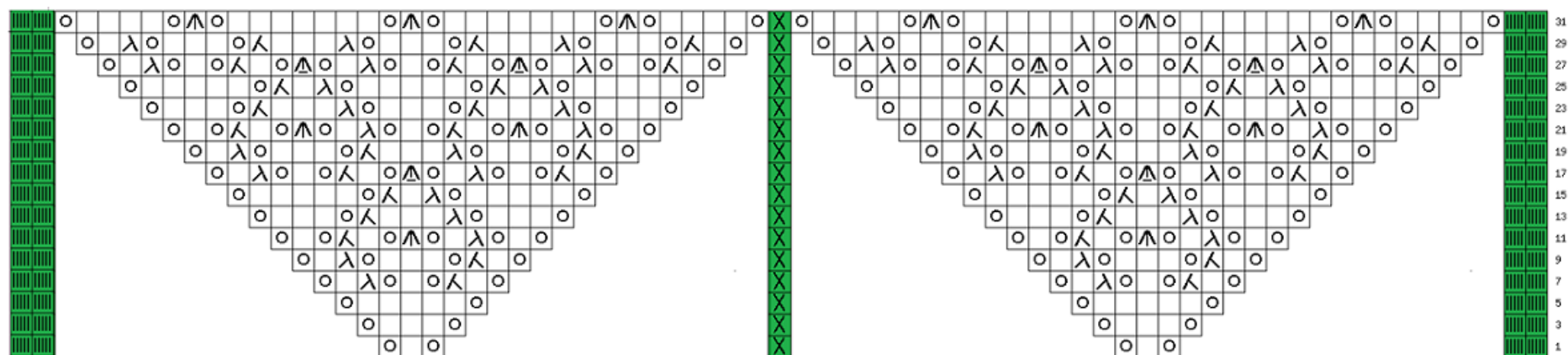


Chart 2: knit rows 1 – 32 at least 2 times.

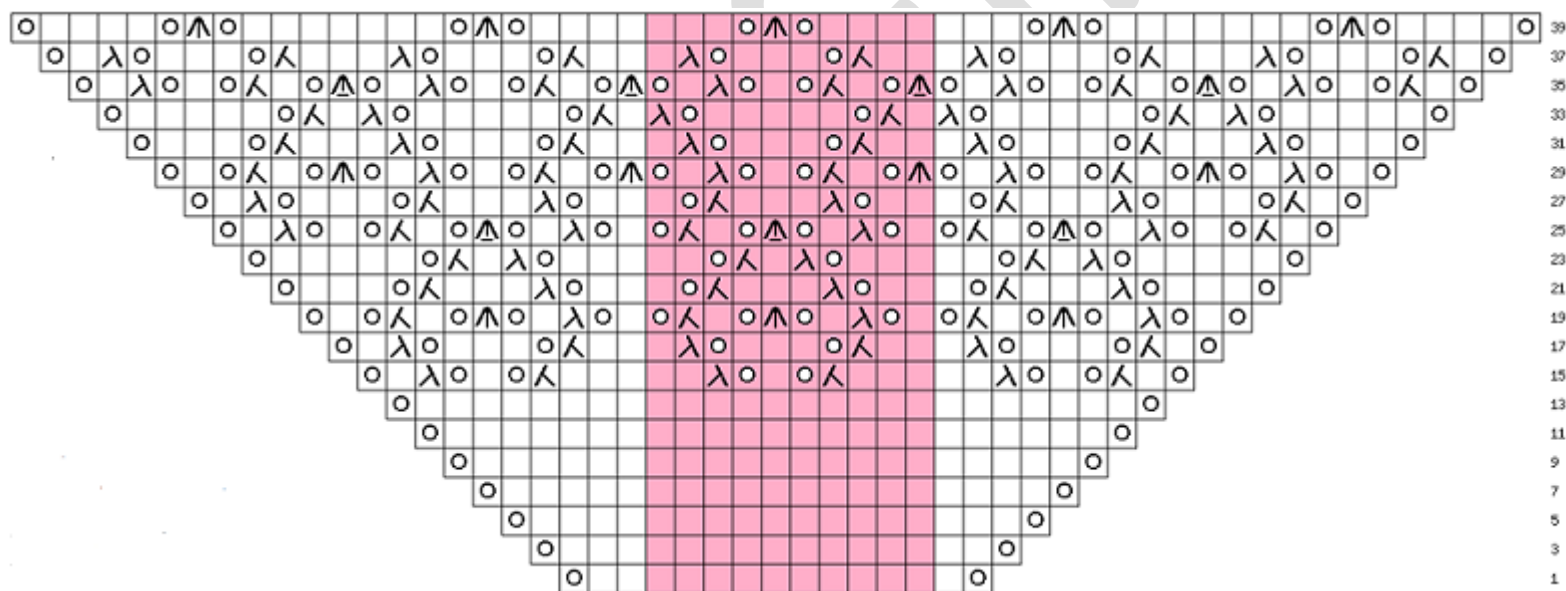


Chart 3: knit rows 1 – 34 once

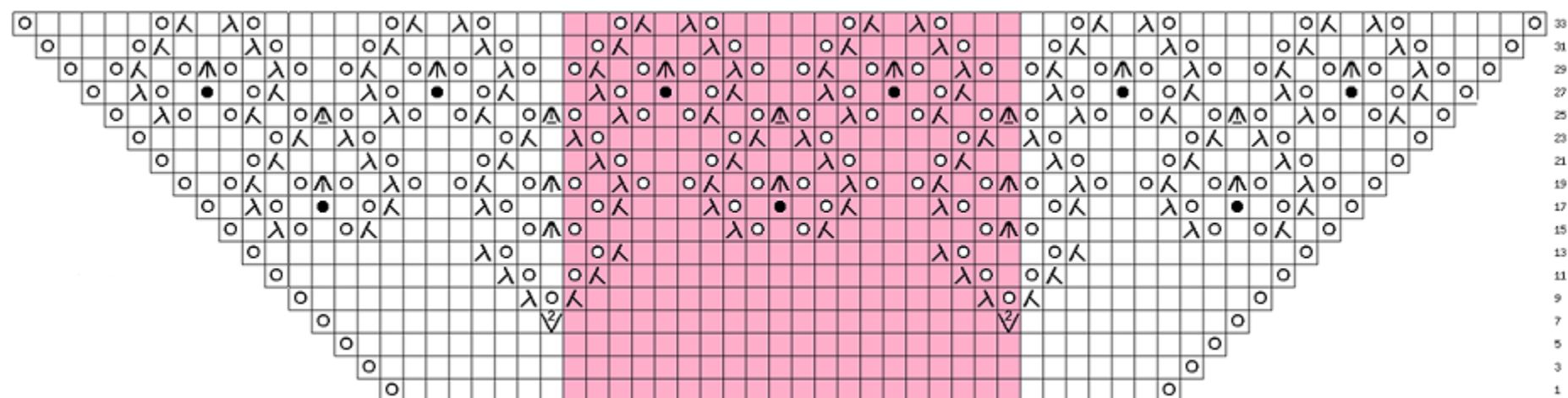


Chart 4: knit rows 1 – 32 once

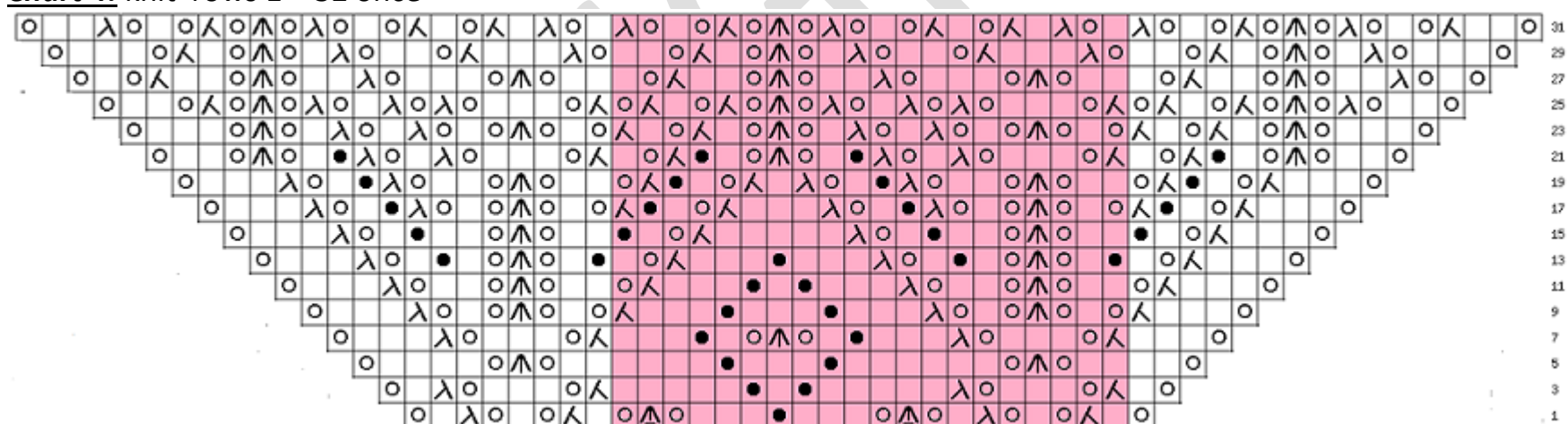
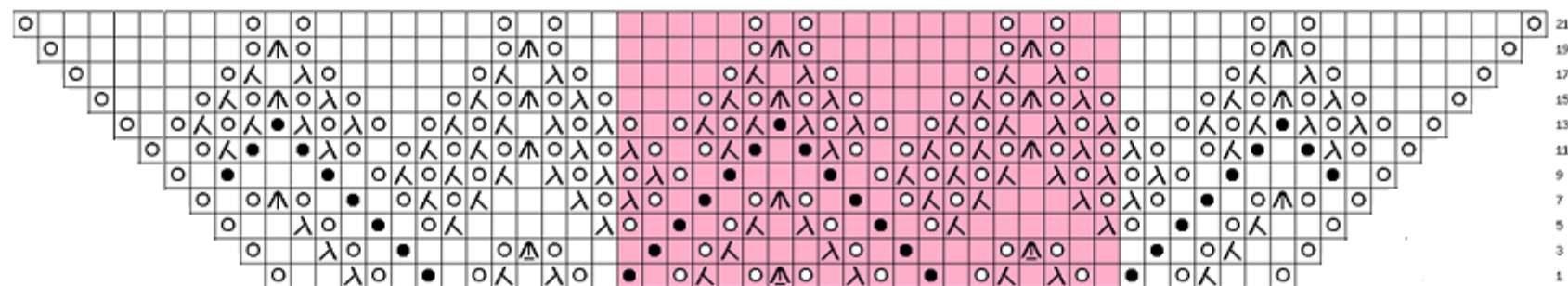


Chart 5: knit rows 1 – 18 once



Ending: consist 3 rows.

1. row:



2.row (last row on purl side): change needles for half size bigger and knit this row.

3.row: cast off like this: knit 2, put back on the left needle, knit together through the back loop; *knit 1, put this and the last one back to the left needle and knit these together tbl*. Repeat until You have one stitch left.

Break the yarn and pull it through the stitch.

Hold the shawl about 5 minutes in lukewarm water. Gently squeeze (do not twist!!!) out excessive water, block on the flat surface with pins.

Let it dry. Weave ends and You are done!

Thank You for knitting this shawl!