

Papyrifera

Papyrifera is the botanical name of a birch variation.

This shawl is a bit more than half-circled, worked top down. It is inspired by a Japanese leaf yoke pullover pattern, published in 1991.

Material:

- *about 80 g Madil „Kid Seta”
sample needed 77g or 652m/713yd*
- *knitting needles 3,75 mm (US 5)*
- *crochet hook 3,5 mm (E)*
- *stitch markers (optional)*
- *darning needle*
- *blocking wires and pins*

Size (blocked):

150 cm x 75 cm / 59 in x 29,5 in

Skill level: Intermediate



Nearly the whole shawl is charted, except the set-up rows. There is an accompanying instruction with each chart. Please be aware of patterned wrong side rows and read instructions thoroughly!

The key with abbreviation of all used stitches is on the last page.

Cast on 15 stitches, leaving an about 30 cm long tail.

(I worked a long-tail cast on, but feel free to work any other cast on. The cast on will be closed later.)

Set-up rows:

Stitches in brackets [] are edge stitches.

Row 1-3 knit all stitches = 15 stitches

Row 4 (RS) kfb 7x, k1, kfb 7x = 29 stitches

Row 5 (WS) k all stitches

Row 6 (RS) [k2tog, yo, k1] k23, [k1, yo, ssk]

Row 7 (WS) [k3], k23 [k3] = 29 stitches

Chart 1

Rows 1 – 24(stitch count after row 24 = 76 stitches)

The yellow marked stitches are edge stitches – to work once at beginning and end of row. Between edge stitches repeat white stitches 11x each row, work green stitches once.

	16	15	14	13	12	11	10	9	8	7	6	5	4	3	2	1	
24	—	—	—	—	—	—	—	—	—	—	—	—	—	—	—	—	
	↘	○	—	—	—	—	—	—	—	—	—	—	—	—	○	↗	23
22	↘	○	—	—	—	—	—	—	—	—	—	—	—	—	—	—	
	↘	○	—	—	—	—	—	—	—	—	—	—	—	—	○	↗	21
20	↘	○	—	—	—	—	—	—	—	—	—	—	—	—	—	—	
	↘	○	—	—	—	—	—	—	—	—	—	—	—	—	○	↗	19
18	↘	○	—	—	—	—	—	—	—	—	—	—	—	—	—	—	
	↘	○	—	—	—	—	○	—	—	—	—	—	○	—	○	↗	17
16	↘	○	—	—	—	—	—	—	—	—	—	—	—	—	—	—	
	↘	○	—	—	—	—	—	—	—	—	—	—	—	—	○	↗	15
14	↘	○	—	—	—	—	—	—	—	—	—	—	—	—	—	—	
	↘	○	—	—	—	—	—	—	—	—	—	—	—	—	○	↗	13
12	↘	○	—	—	—	—	—	—	—	—	—	—	—	—	—	—	
	↘	○	—	—	—	○	—	—	—	—	—	—	○	—	○	↗	11
10	↘	○	—	—	—	—	—	—	—	—	—	—	—	—	—	—	
	↘	○	—	—	—	—	—	—	—	—	—	—	—	—	○	↗	9
8	↘	○	—	—	—	—	—	—	—	—	—	—	—	—	—	—	
	↘	○	—	—	—	—	—	—	—	—	—	—	—	—	○	↗	7
6	↘	○	—	—	—	—	—	—	—	—	—	—	—	—	—	—	
	↘	○	—	—	—	○	—	—	—	—	—	○	—	—	○	↗	5
4	↘	○	—	—	—	—	—	—	—	—	—	—	—	—	—	—	
	↘	○	—	—	—	—	—	—	—	—	—	—	—	—	○	↗	3
2	↘	○	—	—	—	—	—	—	—	—	—	—	—	—	—	—	
	↘	○	—	—	—	—	—	—	—	—	—	—	—	—	○	↗	1

Chart 2

Rows 25 – 52 (stitch count after row 52 = 183 stitches)

The yellow marked stitches are edge stitches – to work once at beginning and end of row. Between edge stitches repeat white stitches 11x each row, work green stitches once.

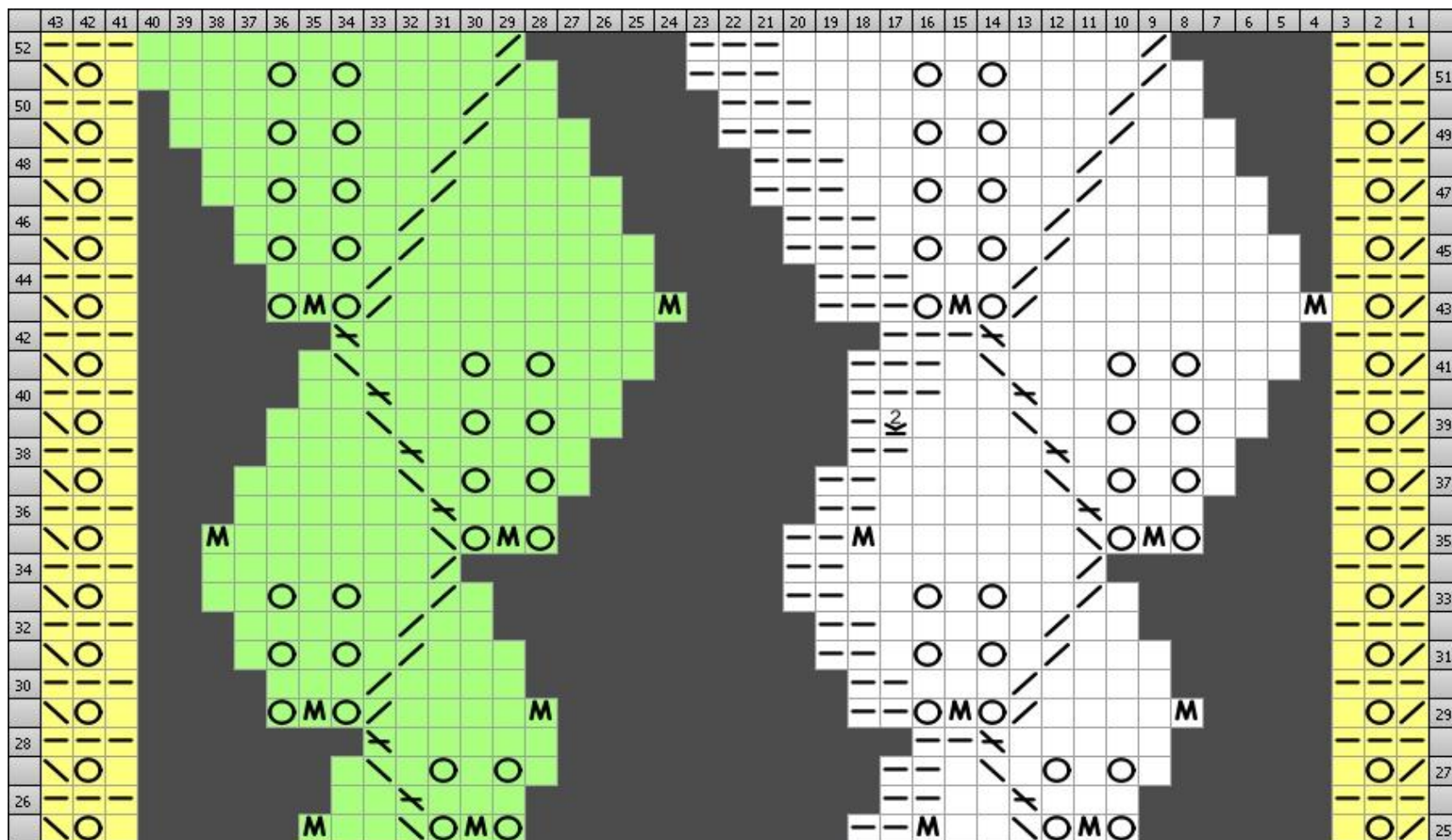


Chart 3

Rows 53 – 78 (stitch count after row 78 = 242 stitches)

The yellow marked stitches are edge stitches – to work once at beginning and end of row. Between edge stitches repeat white stitches 11x each row, work green stitches once.

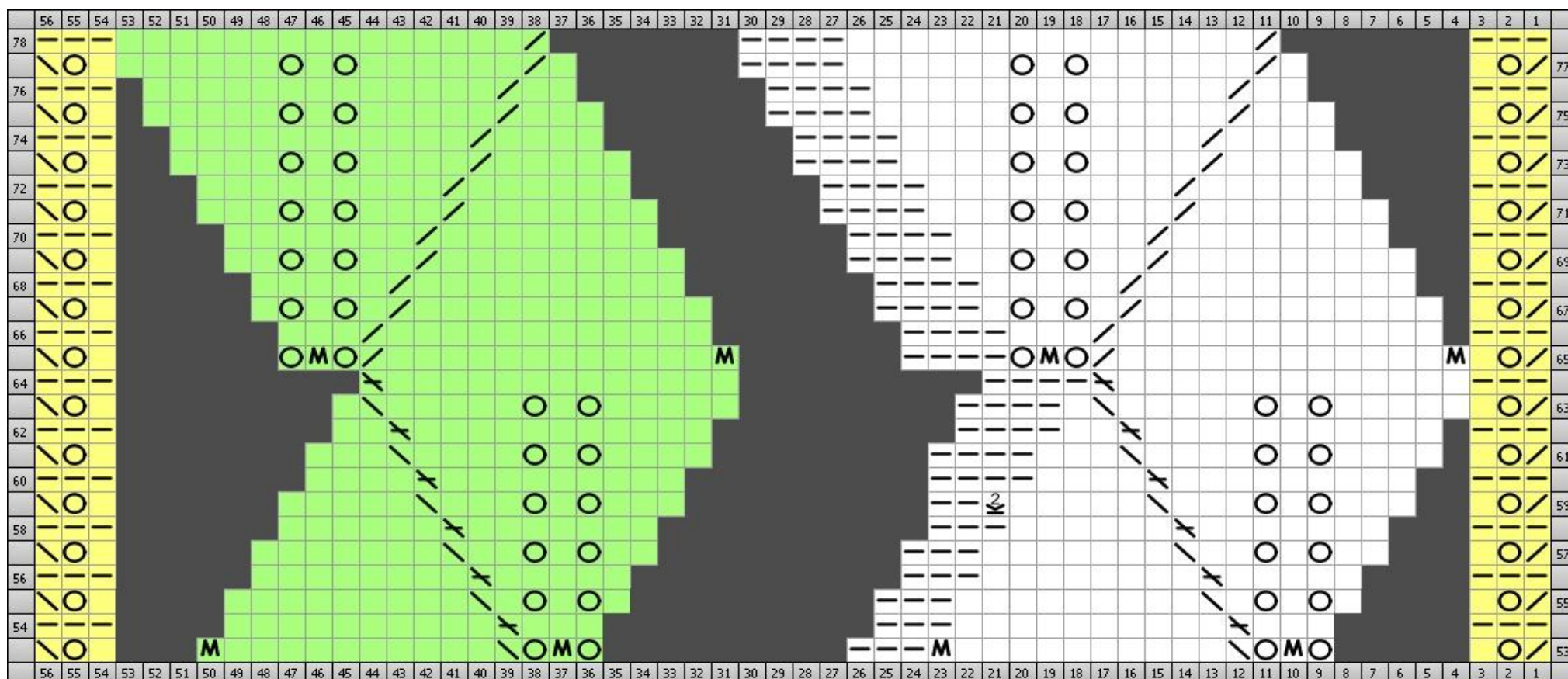


Chart 4

Rows 79 – 106 (stitch count after row 106 of chart 4 = 346 stitches)

The yellow marked stitches are edge stitches – to work once at beginning and end of row. Between edge stitches repeat white stitches 11x each row, work green stitches once.

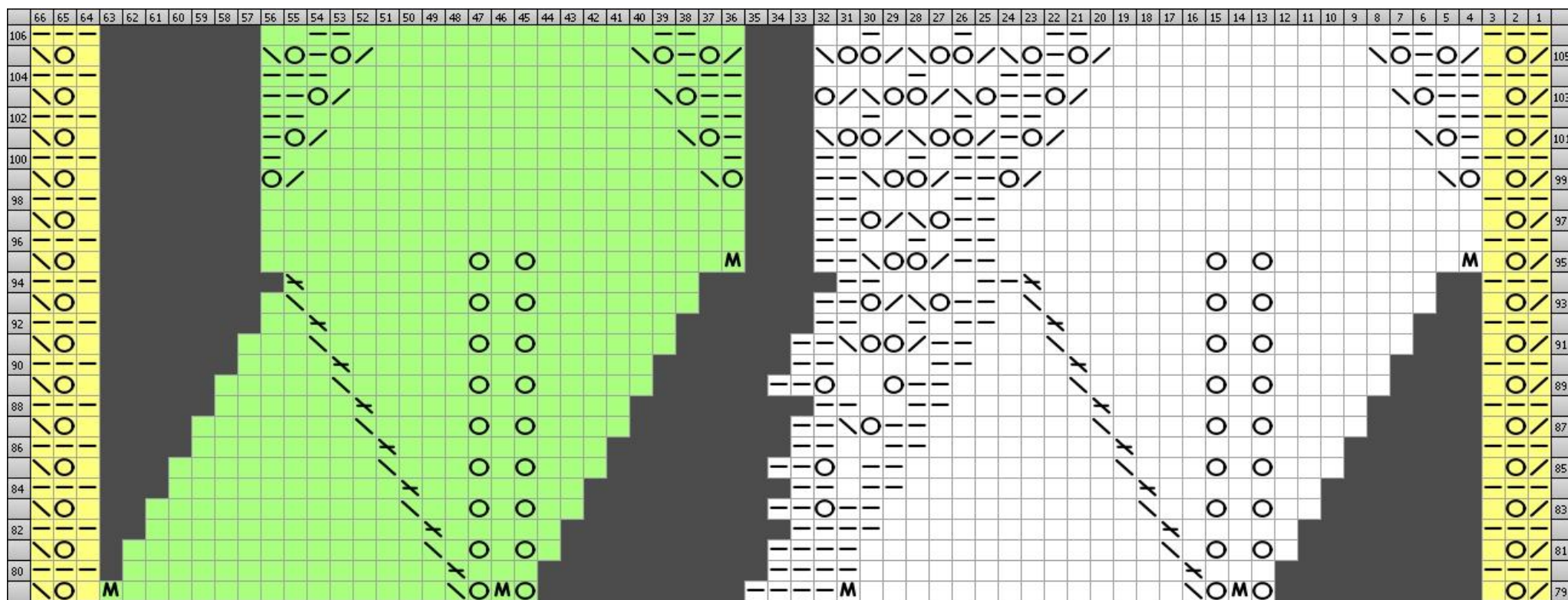


Chart 5

Rows 107 – 132 (stitch count after row 132 of chart 5 = 382 stitches)

The yellow marked stitches are edge stitches – to work once at beginning and end of row. Between edge stitches repeat white stitches 11x each row, work green stitches once.

[illegible]

Chart 6

Stitch count after row 2 of chart 6: 403 stitches

These two rows are building the intersection from the body of the shawl to the border.

The yellow marked stitches are edge stitches – to work once at beginning and end of row. Between edge stitches work as described below the chart.

	38	37	36	35	34	33	32	31	30	29	28	27	26	25	24	23	22	21	20	19	18	17	16	15	14	13	12	11	10	9	8	7	6	5	4	3	2	1	
2	—	—	—												—				—						—											—	—	—	
	↘	○		○		○		○		○		○	↘	○	○	↗	○	↘	○	○	↗	○	↘	○	○	↗	○		○		○		○		○		○	↗	1

Work stitches 4-12 once

Repeat stitches 13-16 6x

The blue frame marks one pattern repeat, work a total of 10 repeats, one repeat is: work stitch 17 once, repeat stitches 18-21 8x

Work stitch 22 once

Repeat stitches 23-26 6x

Work stitches 27-35 once

Written instructions for Row 1 of chart 6: k2tog, yo, k1, (yo, k1) 4x, yo, (k2tog, yo, yo, ssk) 6x, [yo, (k2tog, yo, yo, ssk) 8x] 10x, yo, (k2tog, yo, yo, ssk) 6x, (yo, k1) 4x, yo, k1, yo, ssk

Chart 7

Rows 1 – 18 of border (stitch count after row 18 of chart 7 = 451 stitches)

The yellow marked stitches are edge stitches – to work once at beginning and end of row. Between edge stitches repeat white stitches 12x each row, work green stitches once.

[illegible]

Chart 8

Rows 19 – 32 of border (stitch count after row 32 of chart 8 = 438 stitches)

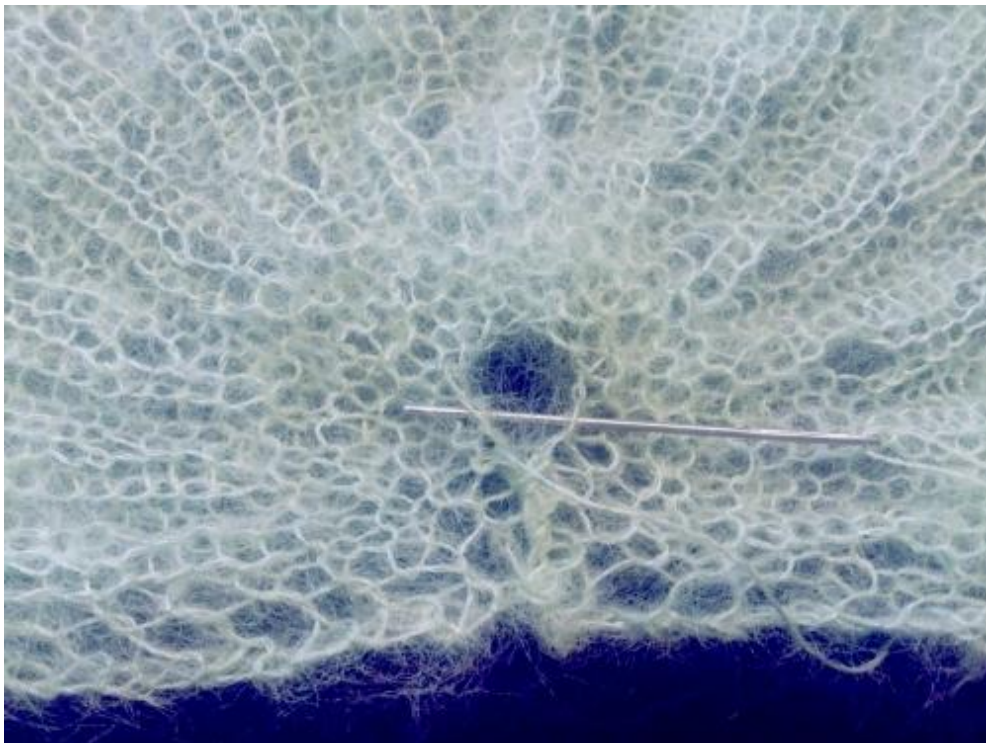
The yellow marked stitches are edge stitches – to work once at beginning and end of row. Between edge stitches repeat white stitches 12x each row, with exception of row 19.

NOTE: at the end of row 19 - after working the stitch in column 39 of the 12th repeat - there will be left 4 stitches (excluding 3 edge stitches). They are to work as the green marked stitches.

After finishing row 32 take the hook and finish off by crochet 3 stitches together with a single crochet stitch, chain 7, end with crochet 3 stitches together with a single crochet stitch. Omit the chain between the single crochet for stitches 24-26 and 27-29.


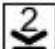












[illegible]

The last step is to close the cast on with a few whip stitches (see pictures below) and to hide all ends.



Soak your shawl using a mild detergent. Remove excess water by rolling it into a towel and press. Block it tightly by using wires for the two long straight edges and pins for each crocheted chain loop to form scallops. Let it dry thoroughly before unpin.

Wear and enjoy!

Key	
 Knit k (RS) Knit (WS) Purl	 Purl Front Back pfb (RS) Purl in Front and Back in same stitch
 Knit 2 Together k2tog (RS) Knit 2 stitches together (WS) Purl 2 Together	 SK2P sk2p (RS) Slip K2tog PSSO
 Purl 2 Together thru back loop p2tog tbl (WS) Purl 2 Together Thru back loop	 Slip Slip Knit ssk (RS) slip, slip, knit slipped sts together
 Knit 3 Together k3tog (RS) Knit 3 stitches together	 Slip Slip Slip Knit sssk (RS) slip slip slip knit the 3 slipped sts together
 Knit Front Back kfb (RS) Knit in Front and Back in same stitch	 Through the Back Loop tbl (RS) Knit the stitch through the back loop
 Make One Knitwise m1 (RS) Make one by lifting strand in between stitch just worked and the next stitch, knit into back of this thread	 No Stitch x (RS) No Stitch (WS) No Stitch
	 Yarn Over yo (RS) Yarn Over
 Purl p (RS) Purl (WS) Knit	

Notes:

