

MAYAN SUNSET



The shapes in this pattern remind me of Mayan/Aztec architecture. The chains also make the motif look like a sun setting on the horizon, so I've named this pattern Mayan Sunset. It's a lovely blend of openness and geometric design. The triangular nature of the shawl allows it to be worn as a shoulder wrap or around the neck as a scarf.

This shawl is a repeating motif worked in a single color. The size is adjustable based on the number of times the pattern is repeated. The pattern uses 7 repeat sections, making a final shawl width of 52" and depth of 22" for the recommended yarn.

Materials Required:

- ❖ DK yarn (500 yards)
 - Should be something that can hold shape well and doesn't have too much drape
 - Yarn used in this project: Cascade Sunseeker (~50% cotton, 50% acrylic)
- ❖ 3.5 mm hook (US 00) or size recommended for your yarn
- ❖ Yarn needle (for weaving in ends)
- ❖ Blocking mats/pins

The shawl can be worked in other yarn weights with the appropriate sized hook, but this will affect gauge, yardage, and finished size.

Instructions:

Stitches (US terms):

Sc – Single crochet

Dc – Double crochet

Ch – Chain

St(s) – Stitch(es)

3dc-cluster – This is essentially a dc3tog, but all worked into the same stitch.

Yo, put hook in stitch, yo, pull through stitch, yo, pull through 2. Repeat between ** twice more, yo, pull through all loops on hook

Trtr – Treble treble stitch – yo 4 times, put hook in stitch, yo, pull through stitch

yo, pull through two loops on chain repeat between ** until only one loop remains

Rows 1-11 are the foundation for the pattern. Rows 12-19 can be repeated as many times as desired. More repeats of Rows 12-19 will make a larger shawl.

Foundation:

Ch 18

Row 1:

Sc in 2nd chain from hook and each ch across (17SC)

Row 2:

Ch5 (counts as dc+ch2), dc in 2nd st, *ch3, skip 3 st, dc in next st, ch2, dc in next st* repeat between ** 3 more times (4 V-motifs across)

Row 3:

Ch3, 3dc-cluster in the ch2 space, ch2, 3dc-cluster in the same ch2 space. *ch3, 3dc-cluster in next ch2 space, ch2, 3dc-cluster in same ch2 space* repeat between ** 2 more times

Row 4:

Ch5 (counts as dc+ch2), dc in first st, ch7, 3sc in first ch3 space, *sc in 3dc-cluster, 2sc in ch2 space, sc in 3dc-cluster, 3sc in ch3 space* repeat between ** once more (17sc total), ch7, dc in last 3dc-cluster, ch2, dc in same 3dc-cluster

Row 5:

Ch3 (counts as dc), 4dc in ch2 space, ch7, sc in 3rd sc from previous row and in next 12sts (13sc total), ch7, 5dc shell in ch2 space

Row 6:

Ch5 (counts as dc+ch2), dc in first st, ch3, dc in last st of shell, ch2, dc in same st. Ch7, sc in 2nd sc and in next 10 sts (11sc total), ch7, dc in first st of shell, ch2, dc in same st, ch3, dc in last st of shell, ch2, dc in same st.

Row 7:

Ch3(counts as dc), 4dc in ch2 space, ch3, 5dc in ch2 space, ch7, sc in 3rd sc from previous row and in next 6sts (7sc total), ch7, 5dc shell in first ch2 space, ch3, 5dc shell in last ch2 space.

Row 8:

Ch5 (counts as dc+ch2), dc in first st, ch3, dc in second ch of ch3, ch2, dc in same st, ch3, dc in last st of last shell, ch2, dc in same st, ch7, sc in 2nd sc and in next 4 sts (5sc total), ch 7, dc in first st of shell, ch2, dc in same st, ch3, dc in second ch of ch3, ch2, dc in same st, ch3, dc in last st of shell, ch2, dc in same st

Row 9:

Ch3 (counts as dc), 4 dc in first ch2 space, *Ch3. 5 dc in next ch2 space*, repeat between ** once more. Ch7. sc in 2nd sc and next 2 sts across (3sc total), ch7, *5 DC in next ch2 space, ch3* repeat between ** once more, 5 dc in last ch2 space.

Row 10:

Ch5 (counts as dc+ch2), dc in the first st, *ch3, dc in second ch of ch3, ch2, dc in same st*, repeat between ** once more, ch3, dc in last st of last shell, ch2, dc in same st,, ch3, trtr in second sc, ch2, trtr in same st, ch3, dc in first st of first shell, ch2, dc in same st, *ch3, dc in second ch of ch3, ch2, dc in same st*, repeat between ** once more, ch3, dc in last st of last shell, ch2, dc in same st.

Row 11:

Ch3, 3dc-cluster in the ch2 space, ch2, 3dc-cluster in the same ch2 space repeat between ** 3 more times, ch3, dc in ch2 space between trtrs, *ch3, 3dc-cluster in the ch2 space, ch2, 3dc-cluster in the same ch2 space* repeat between ** 3 more times

Repeating section:

Repeat rows 12-19 until shawl is desired size. Recommended: 7 repeats

Row 12:

Ch10 (counts as dc+ch7), 3sc in first ch3 space, *sc in 3dc-cluster, 2sc in ch2 space, sc in 3dc-cluster, 3sc in ch3 space* repeat between ** once more (17sc total), [ch7, dc in dc from previous row, ch2, dc in same st, ch7, 3sc in second ch3 space, *sc in 3dc-cluster, 2sc in ch2 space, sc in 3dc-cluster, 3sc in ch3 space* repeat between ** once more (17sc total),] ch7, dc in last 3dc-cluster.

For row 12, do the steps between [] once. For each additional repeat section, do the steps between [] once more. (3 repeat sections = repeat between [] 3 times, etc.)

Row 13:

Ch3 (counts as dc), 4dc in dc from previous row, ch7, sc in 3rd sc from previous row and in next 12sts (13sc total), [ch7, 5dc shell in ch2 space, ch7, sc in 3rd sc from previous row and in next 12sts (13sc total),] ch7, 5dc in 7th ch of ch10.

For row 13, do the steps between [] once. For each additional repeat section, do the steps between [] once more. (3 repeat sections = repeat between [] 3 times)

Row 14:

Ch5 (counts as dc+ch2), dc in first st, ch3, dc in last st of shell, ch2, dc in same st. [Ch7, sc in 2nd sc and in next 10 sts (11sc total), ch7, dc in first st of shell, ch2, dc in same st, ch3, dc in last st of shell, ch2, dc in same st.] Repeat between [] across

Row 15:

Ch3 (counts as dc), 4dc in ch2 space, ch3, 5dc in ch2 space, [Ch7, sc in 3rd sc from previous row and in next 6sts (7sc total), ch7, 5dc shell in first ch2 space, ch3, 5dc shell in last ch2 space.] Repeat between [] across

Row 16:

Ch5 (counts as dc+ch2), dc in first st, ch3, dc in second ch of ch3, ch2, dc in same st, ch3, dc in last st of last shell, ch2, dc in same st, [ch7, sc in 2nd sc and in next 4 sts (5sc total), ch 7, dc in first st of shell, ch2, dc in same st, ch3, dc in second ch of ch3, ch2, dc in same st, ch3, dc in last st of shell, ch2, dc in same st] Repeat between [] across

Row 17:

Ch3 (counts as dc), 4 dc in first ch2 space, *Ch3. 5 dc in next ch2 space*, repeat between ** once more. [Ch7. sc in 2nd sc and next 2 sts across (3sc total), ch7, *5 DC in next ch2 space, ch3* repeat between ** once, 5 dc in last ch2 space]
Repeat between [] across

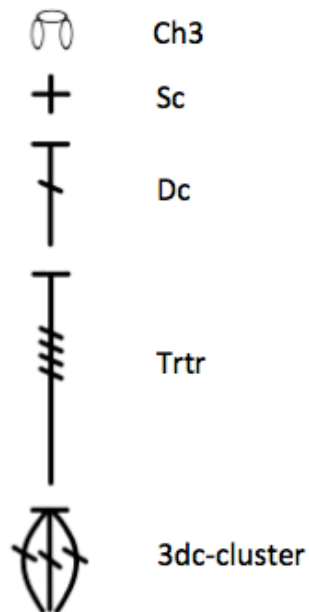
Row 18:

Ch5 (counts as dc+ch2), dc in the first st, *ch3, dc in second ch of ch3, ch2, dc in same st*, repeat between ** once more, ch3, dc in last st of last shell, ch2, dc in same st,, [ch3, trtr in second sc, ch2, trtr in same st, ch3, dc in first st of first shell, ch2, dc in same st, *ch3, dc in second ch of ch3, ch2, dc in same st*, repeat between ** once more, ch3, dc in last st of last shell, ch2, dc in same st.]
Repeat between [] across

Row 19:

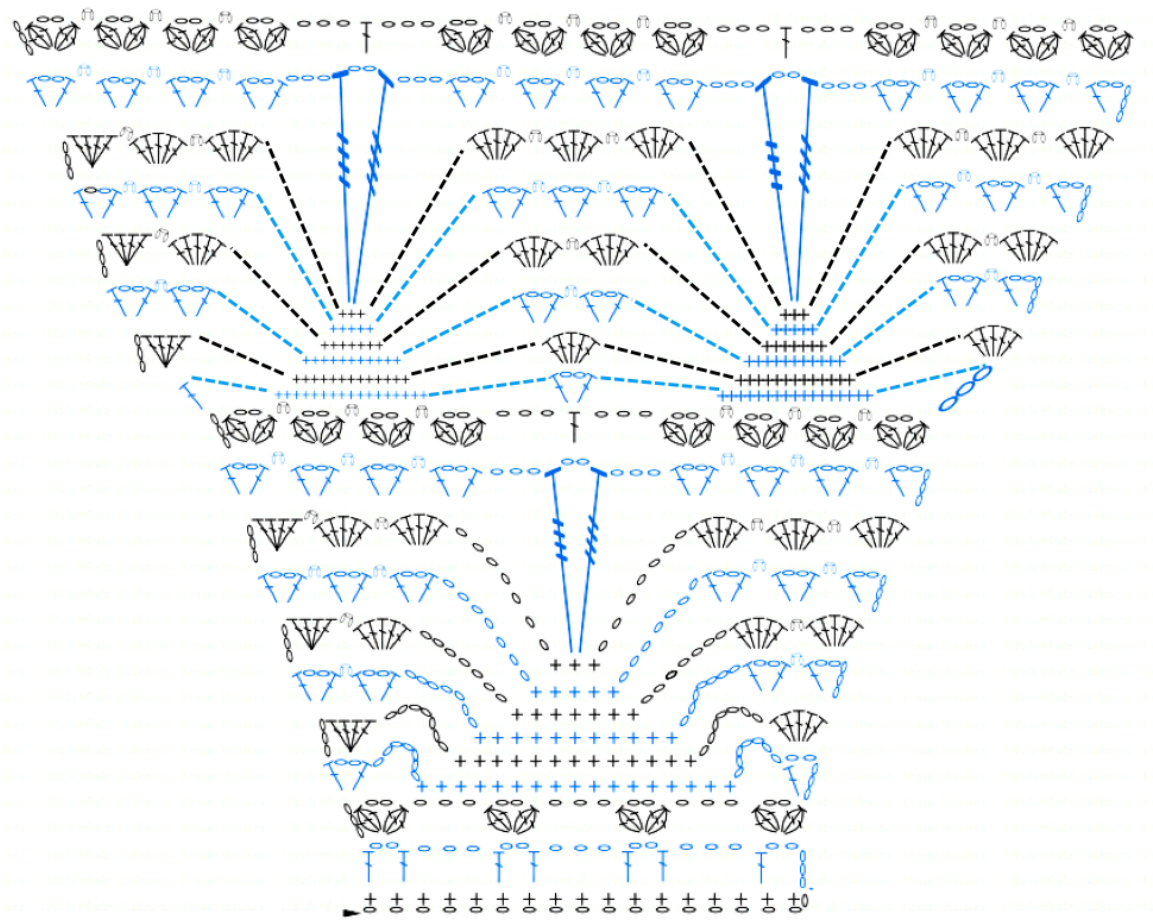
Ch3, 3dc-cluster in the ch2 space, ch2, 3dc-cluster in the same ch2 space repeat between ** 3 more times, [ch3, dc in ch2 space between trtrs, *ch3, 3dc-cluster in the ch2 space, ch2, 3dc-cluster in the same ch2 space* repeat between ** 3 times] Repeat between [] across

When shawl is desired size, tie off yarn and weave in ends. Block for final shaping.

Chart legend:

----- Ch7 (shown as dashed lines in repeating section for clarity)

Chart (zoom in for better detail):

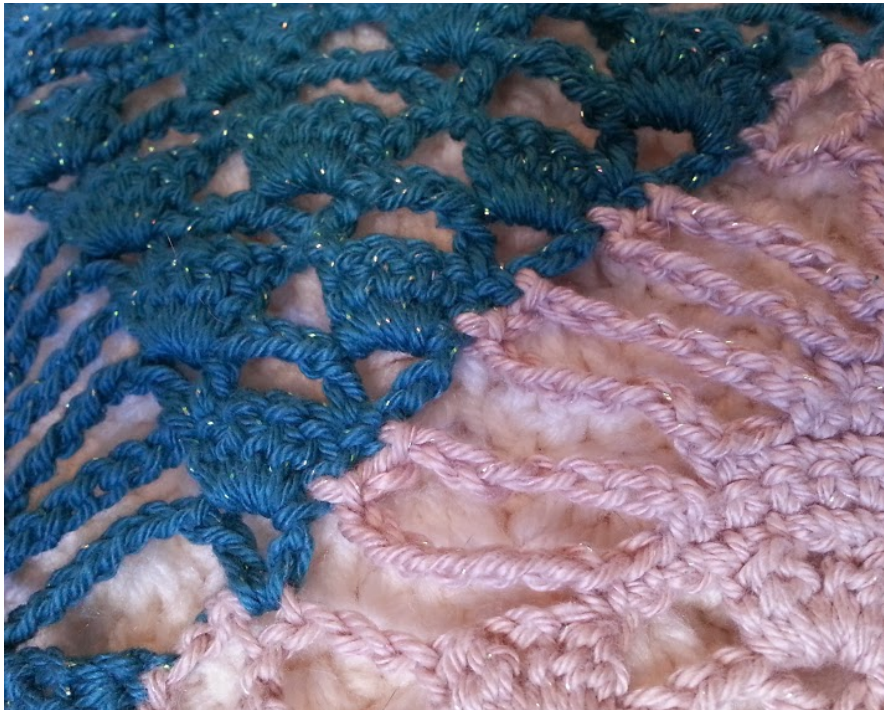


Color changes:

For color changes, the triangles are worked more as motifs than as continuous rows across the shawl.

A new color would begin after row 11 with the {dc, ch2, dc} section of row 12. Instead of a dc, ch2, begin with a ch5 (counts as dc+ch2) and continue the motif as written for the foundation section. The adjacent color will intersect with this color on the ch7 repeats. To connect the adjacent color to this motif, ch7, join with a slip stitch at the top of the corresponding row, ch1, sl st to the join the adjacent color at the top of the next row, then begin the next row for the adjacent color with the ch7. The picture below shows a close-up of the color changes.

With color changes, the shell/v-stitch/cluster section is the first part worked in a color, then the ch7/sc section is worked later. The start of a new color at the center dc (to make the V-shaped color) will always occur between repeating sections of the pattern.



Disclaimer: I did not come up with this design. I found a picture of the motif online with a hand-written chart that was difficult to read. I was unable to find the source, but thought this pattern was too pretty not to share. I drew up a clearer version of the chart with some very slight changes and wrote out the instructions for the motif. If anybody knows the original source of this, I'd love to give proper credit for the design!
