

Frosty apples Shawlette by Lyubov Shalnaya

Полукруглая шаль "Яблоки на снегу"

This is a crescent shaped shawl, knitted from the top down. The increases of the **Body** are made along the edges of the shawl **in every row**. The increases in the **Border** and the **Edge** are made along the edges of the shawl **in each odd row**. There is no central stitch in this shawl. The Body-sts are always **K**. The diagrams show only **RS** of the shawl, but you should work also the edge loop that is always **K**. The diagrams should be read from right to left.

Materials:

Yarn: about 50-100 g of any lace yarn that holds a blocking ~ 875 yds/800 m /100 g.

Circular needles: US 2,5 – 4 – 6 (30ins)

0,5 – 2 mm crochet hook (for the cast off and placing beads)

About 10 g. size 8 beads (if you want)

Blocked size: ~ 60/20 ins. It also depends on the numbers of sts of the Body, your choice of yarn and needles as well as the individual manner of knitting.

The light green shawl is made from ~85 g of Elitnaya (Элитная) by Pehorka (100% wool, 454yds/50g), circular needles US 2,5 – 4 /30 ins. and ab. 10g of beads №8, size 83 ins/20ins.

The emerald shawl is made from ~130 g of W&Y (100% wool, 875yds/100g) circular needles US 1 – 5 /30 ins. and ab. 15g of caviar beads №7, blocked size 62ins/20ins.

Many thanks to Земцова Карина and Ермина Елена for their magnificent photos)))



Lyubov Shalnaya



How to work:

CO 3 sts. Knit 3 rows in garter stitch. At the end of row 3^d turn your work 90° clockwise, pick up and knit 1 st along the longer side of the strip, then pick up the three open stitches onto the left-hand needle and knit them (7sts on right-hand needle). Continue your work with K3-sts garter border loosely at the beginning and the end of each row.

Alternative cast-on method: cast on 7 sts.

Set-Up Row (WS): K3-sts garter border, yo, K1, yo, K3-sts garter border – 9 sts on right-hand needle. You can cross the increases in the next row to do them more accurate.

Work the **Body** as follows:

Row 1: K3-sts garter border, yo, K3, yo, K3-sts garter border.

Row 2: K3-sts garter border, yo, K5, yo, K3-sts garter border.

Row 3: K3-sts garter border, yo, K sts before the edge loop, yo, K3-sts garter border.

Row 4: K3-sts garter border, yo, K sts before the edge loop, yo, K3-sts garter border.

Repeat Rows 3-4 until you have 147 sts (if you want a fichu), 171 sts (for shawlette) or 243 sts (large crescent shawl) on right-hand needle.

Begin to work the **Border** and the **Edge** with a larger size of the needles.

N.B! The increases in the **Border** and the **Edge** are made along the edges of the shawl **in each odd row**.

Work Rows 1-40 of **Border** once.

Work Rows 1-34 of the **Edge** once.

The next row (35th RS) is finishing.

Cast of all sts with a 2 mm hook, as follows: (2sts slipped by single crochet, 3sts picot, 2 chain sts) 4 times, * (1 single crochet, 3sts picot, 2 chain sts) once, (2sts slipped by single crochet, 3sts picot, 2 chain sts) twice, (1 single crochet, 3sts picot, 2 chain sts) 3 times, (2sts slipped by single crochet, 3sts picot, 2 chain sts) twice *, repeat from * to * before the last 9 sts, then (1 single crochet, 3sts picot, 2 chain sts) once, (2sts slipped by single crochet, 3sts picot, 2 chain sts) 4 times.


Cut your yarn and weave in the ends.


Wet your shawl, block the edge loop, then the picot egde of the shawl.


Enjoy it!





Key


 K on RS, P on WS


 P on RS, K on WS


 Yo on RS, P on WS


 K2tog (Knit 2 together on RS, P on WS)


 SKP (Slip1, knit1, pass slipped stitch over on RS, P on WS)

 K3tog (Knit 3 together on RS, P on WS)

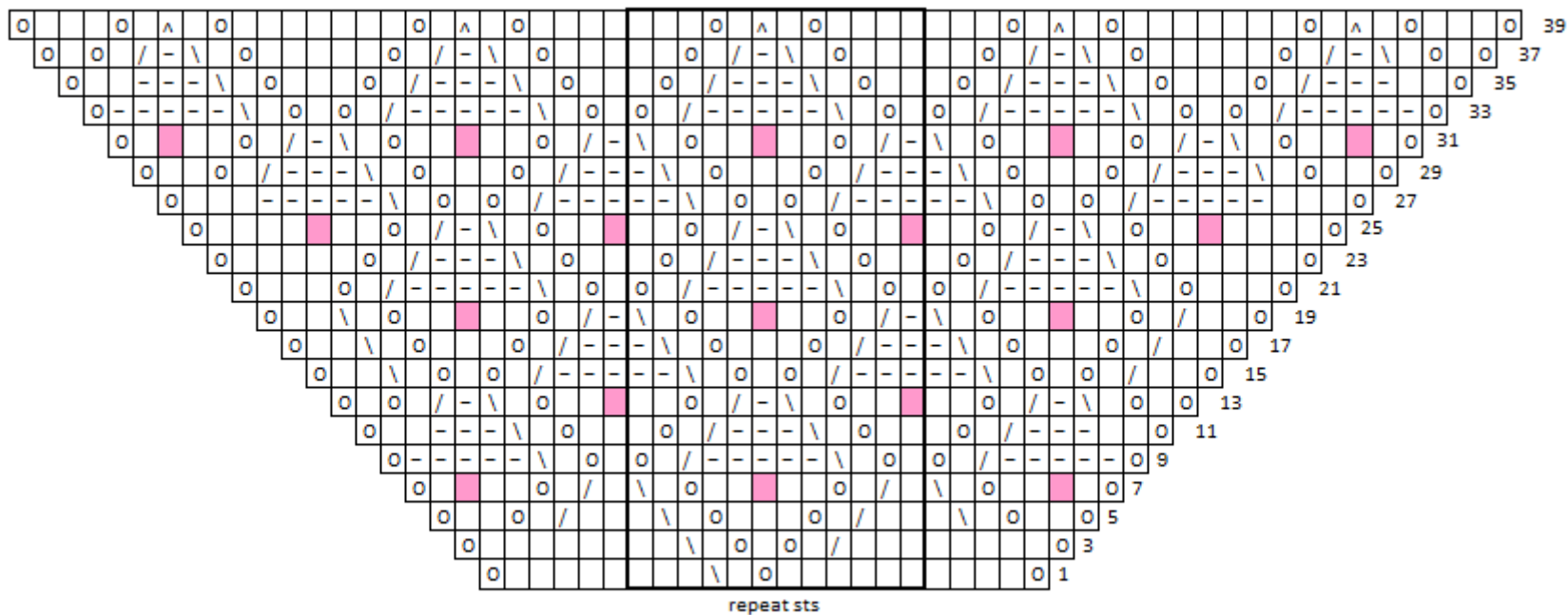
 place bead

 make nupp (*K,Yo* 4 times, K1 on RS, P 9 tog on WS)

 2sts slipped by single crochet, 3sts picot, 2 chain sts

 1 single crochet, 3sts picot, 2 chain sts

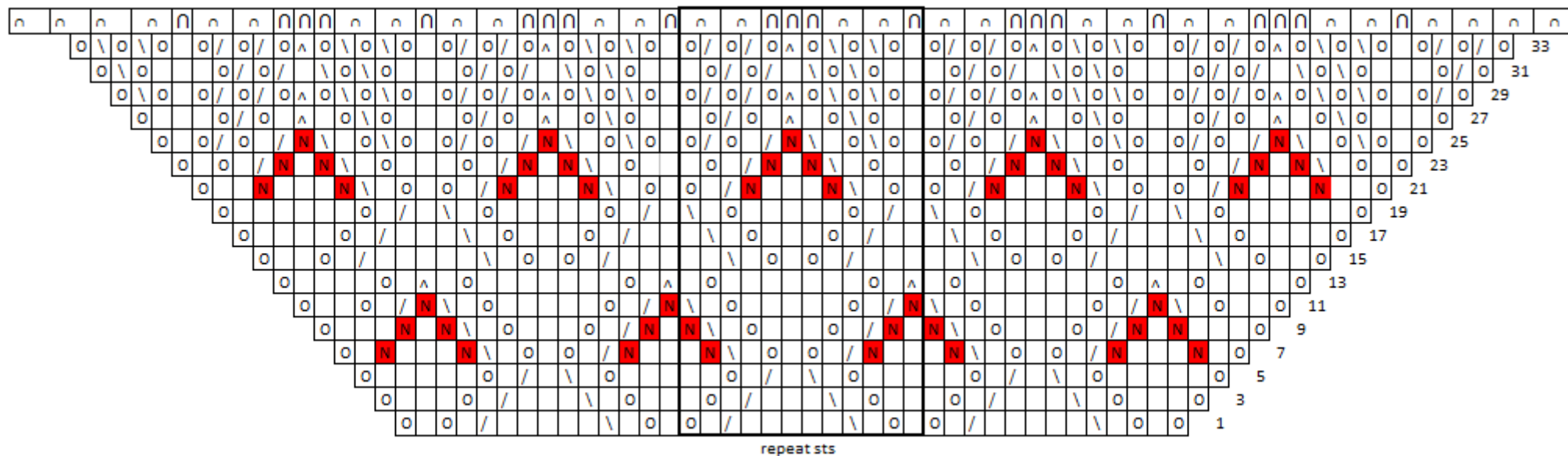
Border



N.B! The increases in the **Border** are made along the edges of the shawl **in each odd row**.



Edge



N.B! The increases in the **Edge** are made along the edges of the shawl **in each odd row**.

Cast of all sts with a 2 mm hook, as follows:

(2sts slipped by single crochet, 3sts picot, 2 chain sts) 4 times,

* (1 single crochet, 3sts picot, 2 chain sts) once,

(2sts slipped by single crochet, 3sts picot, 2 chain sts) twice,

(1 single crochet, 3sts picot, 2 chain sts) 3 times,

(2sts slipped by single crochet, 3sts picot, 2 chain sts) twice *,

repeat from * to * before the last 9 sts, then (1 single crochet, 3sts picot, 2 chain sts) once, (2sts slipped by single crochet, 3sts picot, 2 chain sts) 4 times.

