

Common Bean

By Caitlin ffrench
'ffrench' on Ravelry

This triangle shawl was first written to use yarn that I dyed with black bean water and alum. I am a natural dyer, and love finding new colours. I discovered the blue colour from black beans by reading about it in the natural dye groups on Ravelry.

Materials:

1/2 lb. Chunky weight yarn (214 meters- 233 yards)
8mm needles, or size to obtain gauge

Gauge:

12 sts and 16 rows in stockinette stitch

k-knit

p-purl

k2tog- knit two together

ssk- slip, slip, knit

k3tog- knit three together

sssk- slip, slip, slip, knit

(k1, yo, k1)- Knit one, yarn over, knit one all in one stitch

yo- yarn over

Cast on 7 stitches (You can place markers to keep track of centre stitch if you wish!)

Row 1, and all RS rows of chart:

K2, yo, (chart), yo, k1, yo, (chart), yo, k2

Row 2, and all WS rows of chart:

k2, (chart), p1, (chart), k2

Continue working RS and WS rows of chart for all 55 rows.

The next rows!!

-k2, p to last 2 sts, k2

-k2, yo, k1, *(k1, ssk, yo, k2) rep from * to one stitch before center stitch, k1, yo, k1, yo, k1, *(k1, ssk, yo, k2) rep from * to last 3 sts, k1, yo, k2

- k2, p to last 2 sts, k2

-k2, yo, k2, *(k2, yo, k2tog, k1) rep from * to two stitches before center stitch, k2, yo, k1, yo, k2, *(k2, yo, k2tog, k1) rep from * to last 4 sts, k2, yo, k2

Common Bean

Page 2

-k2, p to last 2 sts, k2

-k2, yo, k3, *(k1, ssk, yo, k2) rep from * to three stitches before center stitch, k3, yo, k1, yo, k3, *(k1, ssk, yo, k2) rep from * to the last 5 sts, k3, yo, k2

-k2, p to last 2 sts, k2

-k2, yo, k4, *(k2, yo, k2tog, k1) rep from * to four sts before center stitch, k4, yo, k1, yo, k4, *(k2, yo, k2tog, k1) rep from * to the last 6 sts, k4, yo, k2

-k2, p to last 2 sts, k2

-k2, yo, k5, *(k1, ssk, yo, k2) rep from * to five sts before center stitch, k5, yo, k1, yo, k5, *(k1, ssk, yo, k2) rep from * to last 7 sts, k5, yo, k2

-Knit all sts

-k2, yo, knit to center stitch, yo, k1, yo, knit to last 2 sts, yo, k2

-Knit all sts

-k2, yo, knit to center stitch, yo, k1, yo, knit to last 2 sts, yo, k2

-Knit all sts

Bind off VERY LOOSELY.

Weave in your ends.

Block your work. I submerge mine in water completely, wring it out... I then lay it on a towel, and roll it up. I put it on the ground all rolled up, and step on it to get out excess water.

Then I put it on blocking mats (or cardboard!) and pin it into place. You can use blocking wires to make the straight edge straighter. I pinned my shawl into points, but you can do as you wish.

Love, love ,love.

Common Bean
Page three
Chart!!

Key



RS: knit WS: purl



No stitch



YO



(k1, yo, k1) in one stitch



RS: k2tog WS: p2tog



sssp



ssp



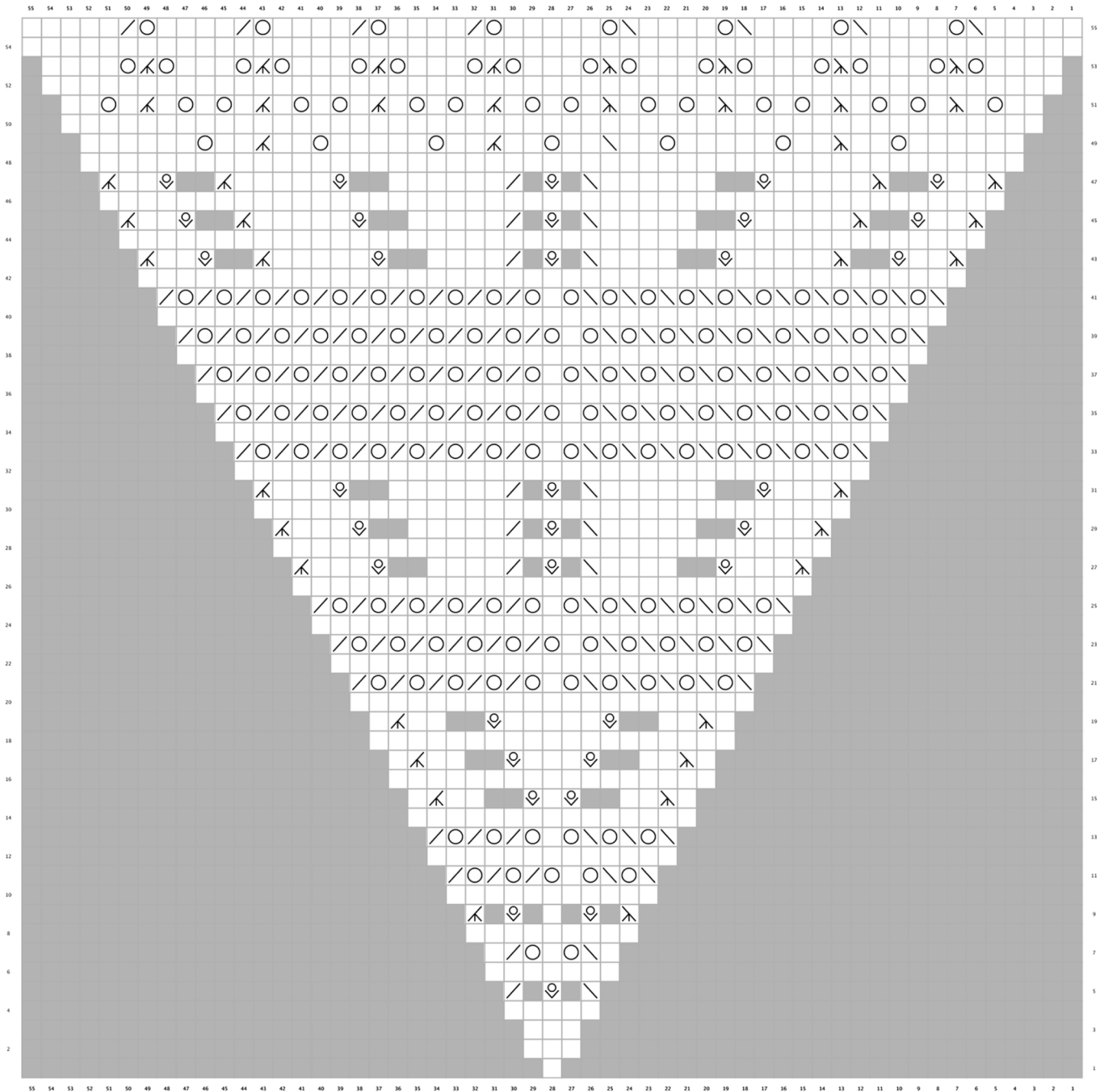
RS: ssk WS: p2tog tbl



RS: k3tog ws: p3tog



RS: sssk WS: sssp



Common Bean

Page 4

Chart

Row 1 (RS): k1.
Row 2 (WS): p3.
Row 3 (RS): k3.
Row 4 (WS): p5.
Row 5 (RS): ssk, (k1, yo, k1) in 1 stitch, k2tog.
Row 6 (WS): p7.
Row 7 (RS): k1, ssk, yo, k1, yo, k2tog, k1.
Row 8 (WS): p9.
Row 9 (RS): sssk, (k1, yo, k1) in 1 stitch, k1, (k1, yo, k1) in 1 stitch, k3tog.
Row 10 (WS): p11.
Row 11 (RS): (ssk, yo) x 2, k1, (yo, k2tog) x 3.
Row 12 (WS): p13.
Row 13 (RS): (ssk, yo) x 3, k1, (yo, k2tog) x 3.
Row 14 (WS): p15.
Row 15 (RS): k1, sssk, k2, (k1, yo, k1) in 1 stitch, k1, (k1, yo, k1) in 1 stitch, k2, k3tog, k1.
Row 16 (WS): p17.
Row 17 (RS): k1, sssk, k2, (k1, yo, k1) in 1 stitch, k3, (k1, yo, k1) in 1 stitch, k2, k3tog, k1.
Row 18 (WS): p19.
Row 19 (RS): k1, sssk, k2, (k1, yo, k1) in 1 stitch, k5, (k1, yo, k1) in 1 stitch, k2, k3tog, k1.
Row 20 (WS): p21.
Row 21 (RS): (ssk, yo) x 5, k1, (yo, k2tog) x 5.
Row 22 (WS): p23.
Row 23 (RS): (ssk, yo) x 5, k1, (yo, k2tog) x 6.
Row 24 (WS): p25.
Row 25 (RS): (ssk, yo) x 6, k1, (yo, k2tog) x 6.
Row 26 (WS): p27.
Row 27 (RS): sssk, k3, (k1, yo, k1) in 1 stitch, k4, ssk, (k1, yo, k1) in 1 stitch, k2tog, k4, (k1, yo, k1) in 1 stitch, k3, k3tog.
Row 28 (WS): p29.
Row 29 (RS): sssk, k3, (k1, yo, k1) in 1 stitch, k5, ssk, (k1, yo, k1) in 1 stitch, k2tog, k5, (k1, yo, k1) in 1 stitch, k3, k3tog.
Row 30 (WS): p31.
Row 31 (RS): sssk, k3, (k1, yo, k1) in 1 stitch, k6, ssk, (k1, yo, k1) in 1 stitch, k2tog, k6, (k1, yo, k1) in 1 stitch, k3, k3tog.
Row 32 (WS): p33.
Row 33 (RS): (ssk, yo) x 8, k1, (yo, k2tog) x 8.
Row 34 (WS): p35.
Row 35 (RS): (ssk, yo) x 8, k1, (yo, k2tog) x 9.
Row 36 (WS): p37.
Row 37 (RS): (ssk, yo) x 9, k1, (yo, k2tog) x 9.
Row 38 (WS): p39.
Row 39 (RS): (ssk, yo) x 9, k1, (yo, k2tog) x 10.
Row 40 (WS): p41.
Row 41 (RS): (ssk, yo) x 10, k1, (yo, k2tog) x 10.

Common Bean

Page 5

Row 42 (WS): p43.

Row 43 (RS): sssk, k2, (k1, yo, k1) in 1 stitch, sssk, k5, (k1, yo, k1) in 1 stitch, k4, ssk, (k1, yo, k1) in 1 stitch, k2tog, k4, (k1, yo, k1) in 1 stitch, k5, k3tog, (k1, yo, k1) in 1 stitch, k2, k3tog.

Row 44 (WS): p45.

Row 45 (RS): sssk, k2, (k1, yo, k1) in 1 stitch, sssk, k5, (k1, yo, k1) in 1 stitch, k5, ssk, (k1, yo, k1) in 1 stitch, k2tog, k5, (k1, yo, k1) in 1 stitch, k5, k3tog, (k1, yo, k1) in 1 stitch, k2, k3tog.

Row 46 (WS): p47.

Row 47 (RS): sssk, k2, (k1, yo, k1) in 1 stitch, sssk, k5, (k1, yo, k1) in 1 stitch, k6, ssk, (k1, yo, k1) in 1 stitch, k2tog, k6, (k1, yo, k1) in 1 stitch, k5, k3tog, (k1, yo, k1) in 1 stitch, k2, k3tog.

Row 48 (WS): p49.

Row 49 (RS): k6, yo, k2, sssk, k2, yo, k5, yo, k2, ssk, k2, yo, k2, k3tog, k2, yo, k5, yo, k2, k3tog, k2, yo, k6.

Row 50 (WS): p51.

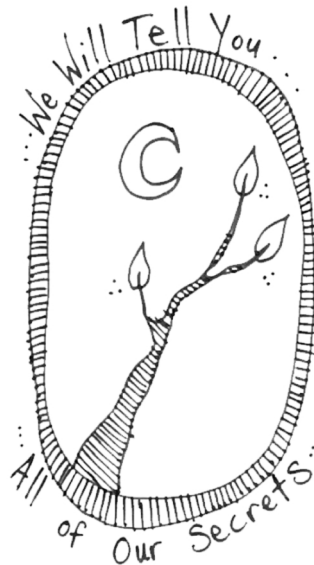
Row 51 (RS): k2, (yo, k1, sssk, k1, yo, k1) x 4, (yo, k1, k3tog, k1, yo, k1) x 3, yo, k1, k3tog, k1, yo, k2.

Row 52 (WS): p53.

Row 53 (RS): k4, (yo, sssk, yo, k3) x 4, (yo, k3tog, yo, k3) x 3, yo, k3tog, yo, k4.

Row 54 (WS): p55.

Row 55 (RS): k5, (ssk, yo, k4) x 3, ssk, yo, k5, (yo, k2tog, k4) x 3, yo, k2tog, k5.



Thank you so much for taking time with this work.

If you need to get in touch with me, I am at caitlinffrench@gmail.com and you can find a lot of photos and words that I put out on the internet at www.wewilltellyouallofoursecrets.blogspot.com

You can find the yarn by contacting me though e-mail. I sell to some local yarn stores!

Please support your local yarn store