

Argyle

Materials: circular needle 3,5mm (US4); hook 2,5mm;
2 balls Garnstudio DROPS Lace 100gr ~ 800m worked
with 2 strands.

Gauge: 18sts x 30rows in 10cm x 10cm

Finish size: 194cm x 88cm



Instructions:

Argyle is a triangular shawl, worked from the top down. The pattern instruction are charted.

Cast on 3 stitches. Slip 1 as if to purl, with yarn in back, knit 2. Repeat this row 5 more times. Next row: knit 3 stitches, and pick up 3 stitches along the side of your strip of knitting, one in each garter ridge. And knit 3 stitches from the first row. Now 9 stitches on the needle.

Start to work the chart. Please note that in chart only right side rows are marked. At the wrong side purl all stitches, except knit the first 3 and the last 3 stitches (garter board). This chart shows only half of shawl. There are 7 stitches, which are not shown on this chart: first 3, last 3 and center stitch.

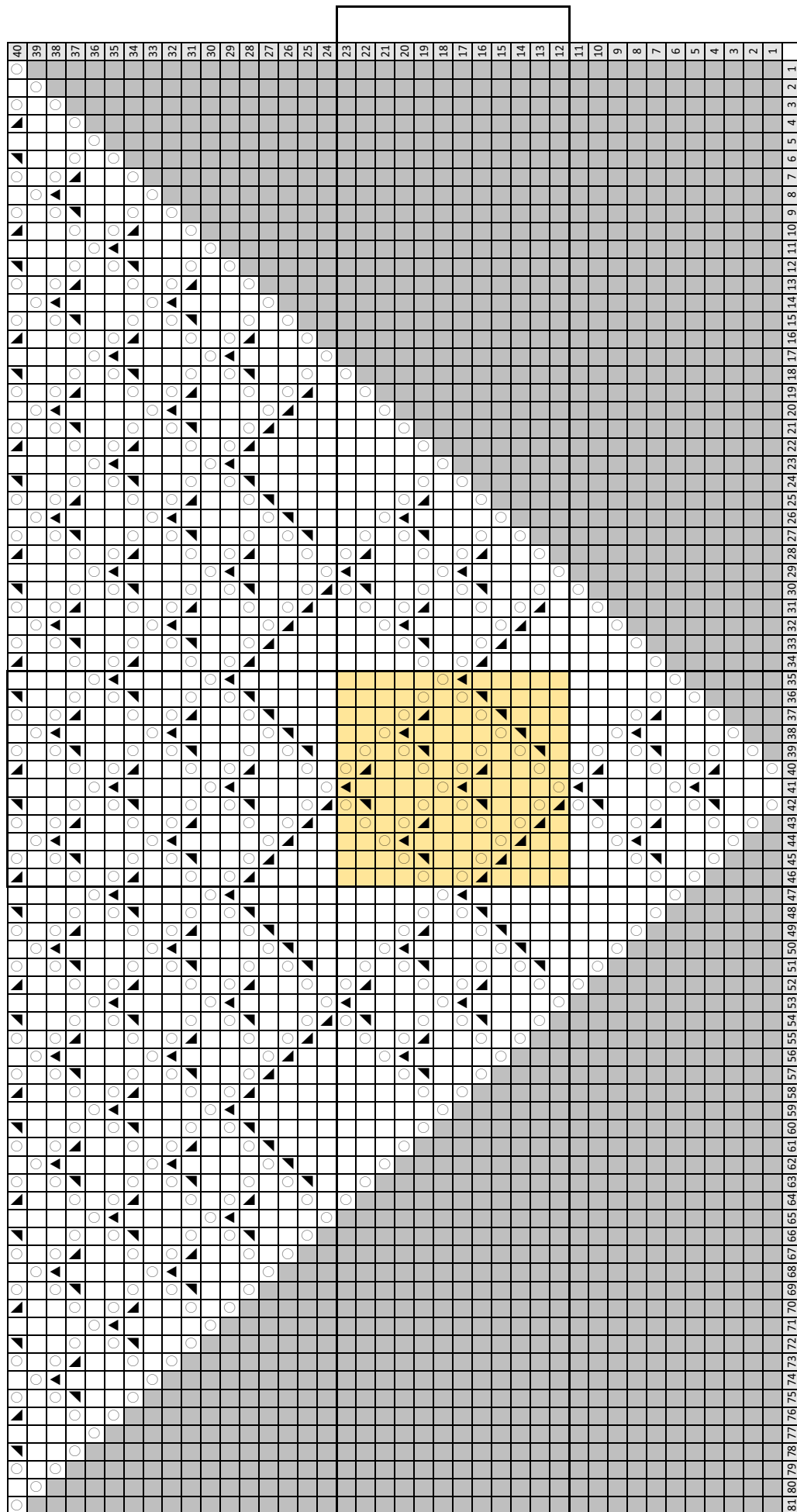
After row 23 repeat 6 times rows 12-23.

Bind off:

Work out final (wrong side) row to make binding off. Knit 3 together, create the chain (7 loops), knit 3 together, and cast off 1 stitch. Each 3 knit together will line up with the pattern and close each rhomb.

Sew ends and block the shawl.

Chart



Key

- knit stitch
- yarn over
- knit two stitches together
- slip one as to knit, knit one, pass slipped stitch over
- slip one as to knit, knit two together, pass slipped stitch over
- no stitch