



ALPINE CAT SWEATER

Crochet Pattern by Anna Lee

Materials

- Yarn: Premier Cotton Fair (#2 weight)
 - » Color A: Turquoise
 - » Color B: Silver
- Size H/5mm crochet hook
- Size I/5.5mm crochet hook
- Size J/6mm crochet hook
- Stitch markers (optional)
- Tapestry needle
- Tape measure

Finished Measurements

Neck - 10 inches
 Chest - 15 inches
 Belly - 17 inches
 Length - 14 inches

Skill Level: Easy



Abbreviations

US crochet terms:

ch = chain
 st(s) = stitch(es)
 sl st = slip stitch
 blo = Back Loops Only
 sc = single crochet
 hdc = half double crochet
 dc = double crochet
 fpdc = front post double crochet
 sc2tog = single crochet 2 stitches together
 inc = increase
 *lsc = long single crochet
 *fbsc = front bars single crochet
 RS = right side; outside of the sweater
 WS = wrong side; inside of the sweater

*Long single crochet:

(Used in Honeycomb Section)

A regular single crochet make with hook insert in the stitch two rows below. Yarn over, pull up a loop the height of your current row, yarn over and pull through two loops on the hook.

*Front bars single crochet:

(Used in Honeycomb Section)

Single crochet around the two bars of lsc stitches in previous row. Insert hook behind the two bars of lsc stitches in the previous row, yarn over, pull up a loop, yarn over and pull through two loops on the hook.

Notes

This pattern uses Honeycomb stitch and Alpine stitch. You will need to be familiar with these stitches to complete the project.

FPDC in Alpine section is worked on the previous row of double crochets two rows below.

You should also be familiar with how to crochet ribbing at end of project.

This sweater is worked from top to bottom in both rounds and rows. Pay attention to the transition.

Beginning ch 1 or ch 2 does not count as a stitch.

Pay attention to the first stitch of each round and row. Most are worked in the same stitch as beginning chain; but some are worked in the next stitch.

At the end of each round, sl st in the first stitch from previous round to join unless otherwise noted.

The sizing provided in this pattern is approximate. Depending on your tension, the finished measurements may vary by about 1/2 inch.

You may try using a different weight yarn and larger or smaller hook size to obtain your desired measurements.

Pattern

Neck/Collar Section

Ribbing *[with 5mm hook and color A]*

Row 1:

Ch 27. Hdc in 3rd ch from hook and across. (25)

Row 2:

Ch 2. Turn. Hdc blo in first st and across. (25)

Row 3 - 26:

Repeat row 2. Ch 1 at the end.

Do not cut yarn.

Fold piece in half, sl st to join the first 12 sts. (Figure 1)

Sl st in the remaining 13 sts on top side. (Figure 2)

Rotate piece clockwise.

Ch 1. Sc in corner st (same st as the last sl st), sc along side evenly. (40)

Figure 1

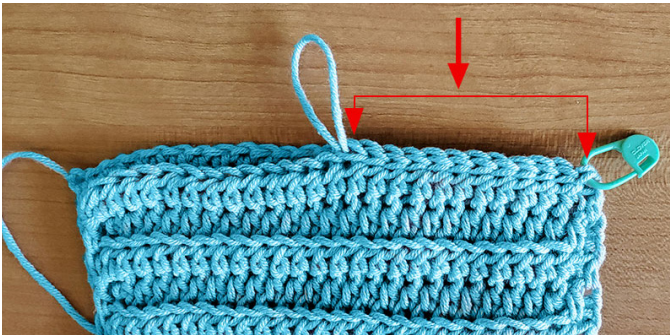
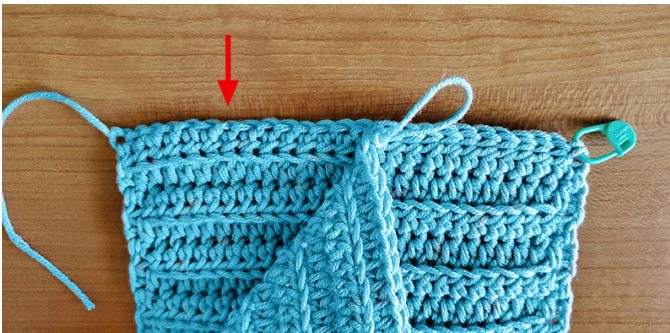


Figure 2



Rotate piece clockwise.

Ch 1. Sl st in corner st (same st as the last sc), sl st in next 12 sts on bottom side.

Cut yarn and tie off.

Ch 1. Sc in corner st (same st as the last sl st), sc along side evenly. (40)

Rotate piece clockwise.

Ch 1. Sl st in corner st (same st as the last sc), sl st in next 12 sts on bottom side.

Cut yarn and tie off.

Main Body Section

[with 6mm hook and color B]

Attach yarn to front center of collar where the neck piece was joined with sl st. (Figure 1 where stitch marker is)

Round 1: Ch 1. Sc 40 sts around evenly. (40)

Round 2: Ch 1. Sc in same st, sc 3, inc, *sc 4, inc*, repeat *-* to end. (48)

Round 3: Ch 1. Sc in same st and around. (48)

****Honeycomb stitch section****

[switch to ROW]

Row 4: Ch 1. Turn. WS. Lsc below ch 1 st, sc, *lsc, sc*, repeat *-* to end. (48)

Sl st to top of first lsc to join.

Row 5: Ch 1. Turn. RS. Fbsc around the last bar and first bar from previous row, sc, *fbsc, sc*, repeat *-* to end. (48)

Sl st to top of first fbsc to join.

Row 6: Ch 1. Turn. WS. Sc in next st, lsc, *sc, lsc*, repeat *-* to end. Ending with a lsc over the beginning ch st. (48)

Sl st to top of first sc to join.

Row 7: Ch 1. Turn. RS. Fbsc around the last bar and first bar from previous row, sc, *fbsc, sc*, repeat *-* to end. (48)

Sl st to top of first fbsc to join.

Do not turn. *[continue in ROUNDS]*

Round 8: Ch 1. Sc in same st, sc, inc, *sc 5, inc*, repeat *-* until last 3 sts, sc in last 3 sts. (56)

Armholes

Round 9: Ch 1. Sc in same st, sc 4, ch 12, skip next 10 sts, sc 28, ch 12, skip next 10 sts, sc in last 3 sts. (36 sts, 24 chs)

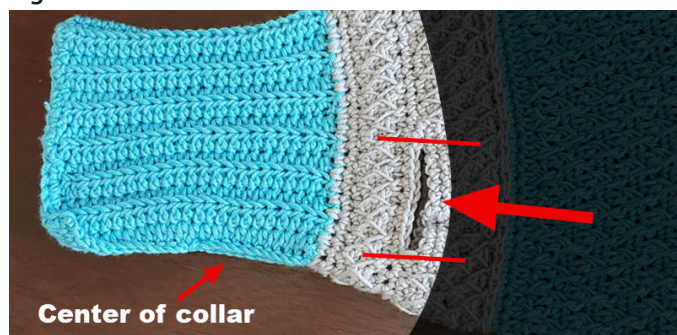
Round 10: Ch 1. Sc in same st and around. (60)

Progress Check

Flatten the piece by the center of the collar. Check to make sure armholes are even and match on both sides. (Figure 3)

A little variation is ok but not too much.

Figure 3



[switch to ROW]

Note: For Row 11 only, make lsc 3 rows down instead of 2 rows down.

Row 11: Ch 1. Turn. WS. Lsc below ch 1 st, sc, *lsc, sc* twice, sc2tog, sc 9, lsc, sc, lsc, sc2tog, *lsc, sc* 6 times, lsc, sc2tog, *lsc, sc* 4 times, sc 5, sc2tog, sc 6, lsc, sc2tog. (56)

Sl st to top of first lsc to join.

Row 12: Ch 1. Turn. RS. Fbsc, sc, fbsc around 1 bar, sc 11, fbsc around 1 bar, sc, *fbsc, sc* 12 times, fbsc around 1 bar, sc 9, fbsc around 1 bar, sc, fbsc, sc in last st in the beginning ch st. (56)

Sl st to top of first fbsc to join.

Row 13: Ch 1. Turn. WS. Sc in next st, lsc, *sc, lsc*, repeat *-* to end. (56)

Sl st to top of first sc to join.

Row 14: Ch 1. Turn. RS. Fbsc around the last bar and first bar from previous row, sc, *fbsc, sc*, repeat *-* to end. (56)

Sl st to top of first fbsc to join.

Row 15: Ch 1. Turn. WS. Sc in next st, lsc, *sc, lsc*, repeat *-* to end. (56)

Sl st to top of first sc to join.

Row 16: Ch 1. Turn. RS. Fbsc around the last bar and first bar from previous row, sc, *fbsc, sc*, repeat *-* to end. (56)

Sl st to top of first fbsc to join.

Row 17: Ch 1. Turn. WS. Sc in next st, lsc, *sc, lsc*, repeat *-* to end. (56)

ALPINE CAT SWEATER | Crochet Pattern by Anna Lee

Sl st to top of first sc to join.

Row 18: Ch 1. Turn. RS. Sc in next st, fbsc, *sc, fbsc*, repeat *-* to end. (56)

Sl st to top of first sc to join.

****End Honeycomb stitch section****

Do not turn. *[continue in ROUNDS & switch to color A]*

Note: For Round 19, crochet loosely so the round is not too tight.

Round 19: Ch 1. Sc in back bump in same st and around. (56)

[switch to 5.5mm hook]

Round 20: ch 1. Hdc in same st and around. (56)

****Alpine stitch section****

Round 21: Ch 2. Dc in same st, fpdc, *dc, fpdc*, repeat *-* to end. (56)

Round 22: Ch 1. Sc in same st and around. (56)

Round 23: Ch 2. Fpdc in same st, dc, *fpdc, dc*, repeat *-* to end. (56)

Round 24: Ch 1. Sc in same st and around. (56)

Round 25-33: Repeat rounds 21-24.

Round 27: Ch 2. Dc in same st, fpdc, *dc, fpdc* 5 times, inc, *fpdc, dc* 14 times, fpdc, inc, *fpdc, dc*, repeat *-* until last st, fpdc in last st. (58)

Round 28: Ch 1. Sc in same st and around. (58)

Round 29: Ch 2. Fpdc in same st, dc, *fpdc, dc*, repeat *-* to end following the Alpine Stitch pattern. (60)

Note: In Round 29, when you get to the inc in Round 27,

- (1) fpdc around the first dc,
- (2) dc in next st at top of second dc, then
- (3) fpdc around the second dc,
- (4) dc in next st.

(Figure 4 and Figure 5)

Then continue with the normal Alpine Stitch pattern.

Figure 4

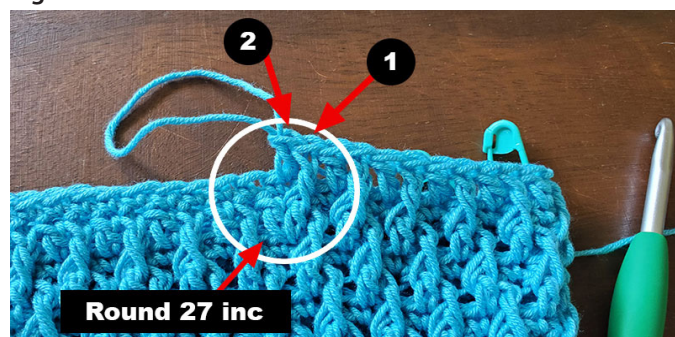
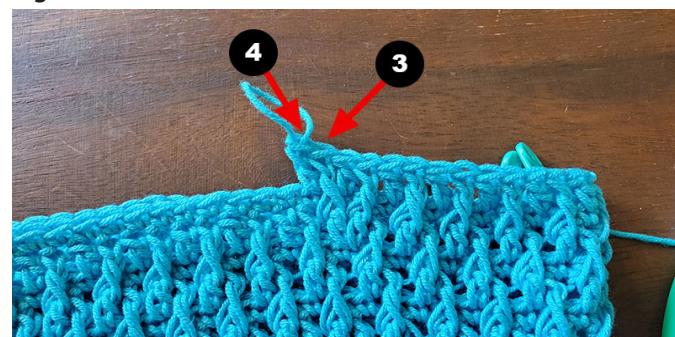


Figure 5



Round 30: Ch 1. Sc in same st and around. (60)

Round 31: Ch 2. Dc in same st, fpdc, *dc, fpdc*, repeat *-* to end. (60)

Round 32: Ch 1. Sc in same st and around. (60)

Round 33: Ch 2. Fpdc in same st, dc, *fpdc, dc*, repeat *-* to end. (60)

Round 34: Ch 1. Sc in same st and around. (60)

Progress Check

The length from bottom of collar to this round should measure about 8 inches. (Figure 6)

If you want it longer, repeat row 31-34 to desired length.

Join round. Cut yarn and tie off.

Flatten the piece by the center of the collar. Find the center on belly side in the last round. (Figure 7)

Place stitch markers in the two center stitches. (Figure 8)

Place a stitch marker in the 8th st from center sts on each side. These will be the first and the last st of your rows from here on. (Figure 9)

Attach yarn to first st. *[switch to ROW]*

Row 35: Ch 1. Sc in same st, hdc, *fpdc, dc*, repeat *-* until the last 2 sts, hdc in next st, sc in last st. (44)

Row 36: Ch 1. Turn. Sc in same st and across. (44)

Row 37: Ch 1. Turn. Sc in same st, hdc, *dc, fpdc*, repeat *-* until the last 2 sts, hdc in next st, sc in last st. (44)

Row 38: Ch 1. Turn. Sc in same st and across. (44)

Row 39: Ch 1. Turn. Sc in same st, hdc, *fpdc, dc*, repeat *-* until the last 2 sts, hdc in next st, sc in last st. (44)

Row 40: Ch 1. Turn. Sc in same st and across. (44)

Row 41: Ch 1. Turn. Sc in same st, hdc, *dc, fpdc*, repeat *-* until the last 2 sts, hdc in next st, sc in last st. (44)

****End Alpine stitch section****

Figure 6

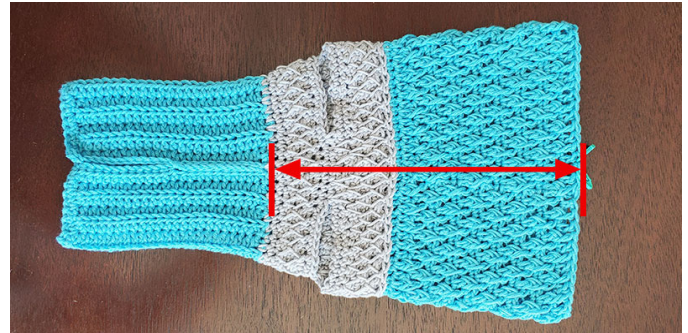


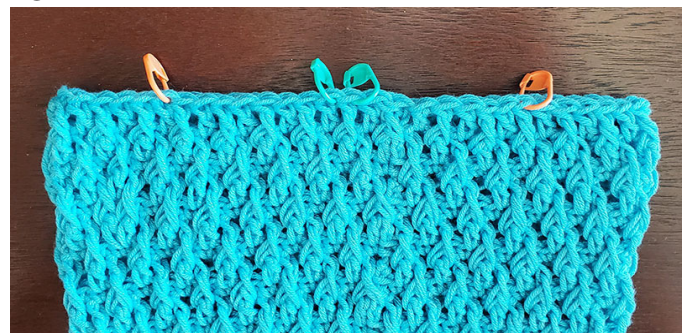
Figure 7



Figure 8



Figure 9



Progress Check

Your piece should look like the photo below at this point. (Figure 10)

Figure 10



Do not turn. Do not cut yarn.

Continue on to Ribbing section.

Ribbing Section

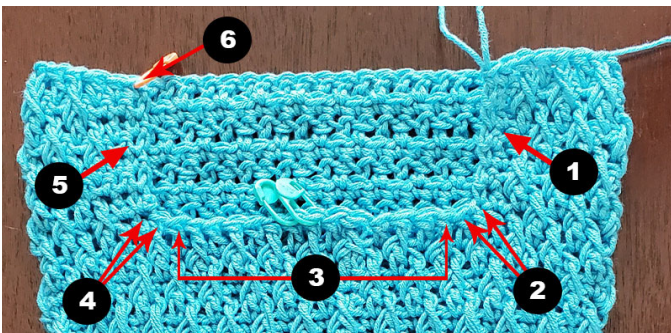
Rotate piece clockwise.

Base round: (Figure 11)

- (1) Work along the short edge to crochet 5 sts evenly,
- (2) sc2tog in the "last st" from Row 34 and the st after,
- (3) sc in next 14,
- (4) sc2tog in next st and the "first st" from Row 34,
- (5) sc 5 sts evenly along the other short edge,
- (6) sc in next 44. (70)

Continue on to start ribbing.

Figure 11



Start ribbing: Ch 8.

Row 1: Hdc 3rd ch from hook and across. (6)

Row 2: Sl st in next 3 sts. Turn. Hdc blo until last st, hdc in both Loops in last st. (6)

Row 3: Ch 1. Turn. Hdc blo to end toward base round. (6)

Repeat row 2 and Row 3 around the base round until the last st in base round.

Last row: Ch 1. Turn. Sc blo to end toward base round. (6)

Sl st in last st.

Sl st to join first row and last row of ribbing together.

Cut yarn and tie off.

Finishing Up

Tidy up armholes

Attach yarn in any st. in the armhole. Ch 1. Sc in same st and across evenly. (26)

Sew in all ends.



From the Author

I hope you enjoyed working with this pattern. Crochet is my favorite hobby and my kitty, Love, has been my biggest inspiration on creating cat hats and sweaters.

This sweater is a great addition to your cat's wardrobe.

Happy hooking and keep your kitties warm!

Cheers!

Copyright

The content in this pattern, including text, photos, and design, is the property of Anna Lee. You may not duplicate this content in any way either whole or in parts. You may not claim this content as your own, sell it, or distribute it in any way or form.

You are welcome to share the link to this pattern. You may do as you wish the item you make from this pattern; however, I do ask that you include a link to this pattern and give me credit for the pattern if you are selling your makes.

