



Murcia

Murcia is a classic shawl consisting of two triangles that are separated by a center stitch. While the stockinette section on top keeps your neck warm, the lace part adds a touch of (the upcoming) summer.

Materials

Yarn // approx. 380yds/348m of aran or worsted weight yarn. Sample is shown in Malabrigo Merino Worsted (2 skeins, color 096 "Sunset").

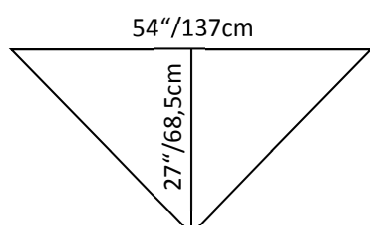
Needles // US 9/5.5mm circular needle, (32"/80cm or longer), or your preferred size

Additional // 4 stitch markers

Gauge & Size

Gauge // exact gauge it not crucial for this project, sample is knit at 4sts x 6 rows = 1" in Stockinette Stitch (before blocking)

Finished size // (after blocking)



Abbreviations

CO	cast on
RS	right side
WS	wrong side
k	knit
p	purl
st(s)	stitch(es)
pm	place marker
slm	slip marker
* - *	repeat between asterisks
yo(s)	yarn over(s)
ptbl	purl through the back loop
k2tog	knit 2 sts together
ssk	slip slip knit
<u>M1R</u>	make 1 right: From the back, insert left needle tip under the horizontal bar between two stitches and lift it. Knit into the lifted loop (1st increased).
<u>M1L</u>	make 1 left: From the front, insert left needle tip under the horizontal bar between two stitches and lift it. Knit the lifted loop through the back (1st increased).

Notes

Slipping the first st of every row purlwise with yarn in front will create a smooth selvedge.

Instructions

CAST ON // GARTER STITCH TAB

Using a provisional cast on, CO 3sts and k 10 rows. Turn work 90° clockwise and pick up & knit 5sts (1 in each of the 5 selvedge stitches). Turn work another 90°, unzip provisional cast on, put those 3 live sts on your needle and knit them (=total of 11sts).

Work set-up row as follows (WS): k3, pm, p2, pm, p1, pm, p2, pm, k3

SECTION ONE // STOCKINETTE STITCH

Row 1 (RS): k3, slm, M1R, k to next m, M1L, slm, k1, slm, M1R, k to next m, M1L, slm, k3

Row 2 (WS): k3, p to last three sts, k3

Repeat rows 1 and 2 until there are 64sts (or any other multiple of 8) between the first and the second marker (the third and the fourth marker likewise). End on Row 2.

SECTION TWO // LACE PATTERN

You can follow the written instructions or use the chart below.

Row 1 (RS): k3, slm, M1R, *k2, k2tog, yo, yo, ssk, k2* [8 (10, 12) times] M1L, slm, k1,

slm, M1R, *k2, k2tog, yo, yo, ssk, k2* [8 (10, 12) times], M1L, slm, k3

Row 2 and all even rows (WS): k3, p to last three sts, k3

Note: In some of the RS rows you will have two consecutive yos. When you get to them on WS rows, work them as (p, ptbl).

Row 3: k3, slm, M1R, k1, *k1, k2tog, yo, k2, yo, ssk, k1* [8 (10, 12) times], k1, M1L, slm, k1, slm, M1R, k1, *k1, k2tog, yo, k2, yo, ssk, k1* [8 (10, 12) times], k1, M1L, slm, k3

Row 5: k3, slm, M1R, k2, *k2tog, yo, k4, yo, ssk* [8 (10, 12) times], k2, M1L, slm, k1, slm, M1R, k2, *k2tog, yo, k4, yo, ssk* [8 (10, 12) times], k2, M1L, slm, k3

Row 7: k3, slm, M1R, k3, *k2, k2tog, yo, yo, ssk, k2* [8 (10, 12) times], k3, M1L, slm, k1, slm, M1R, k3, *k2, k2tog, yo, yo, ssk, k2* [8 (10, 12) times], k3, M1L, slm, k3

Row 9: k3, slm, M1R, k2, k2tog, yo, *yo, ssk, k4, k2tog, yo* [8 (10, 12) times], yo, ssk, k2, M1L, slm, k1, slm, M1R, k2, k2tog, yo, *yo, ssk, k4, k2tog, yo* [8 (10, 12) times], yo, ssk, k2, M1L, slm, k3

Row 11: k3, slm, M1R, k2, k2tog, yo, k1, *k1, yo, ssk, k2, k2tog, yo, k1* [8 (10, 12) times], k1, yo, ssk, k2, M1L, slm, k1, slm, M1R, k2, k2tog, yo, k1, *k1, yo, ssk, k2, k2tog, yo, k1* [8 (10, 12) times], k1, yo, ssk, k2, M1L, slm, k3

Row 13: k3, slm, M1R, k2, k2tog, yo, k2, *k2, yo, ssk, k2tog, yo, k2* [8 (10, 12) times], k2, yo, ssk, k2, M1L, slm, k1, slm, M1R, k2, k2tog, yo, k2, *k2, yo, ssk, k2tog, yo, k2* [8 (10, 12) times], k2, yo, ssk, k2, M1L, slm, k3

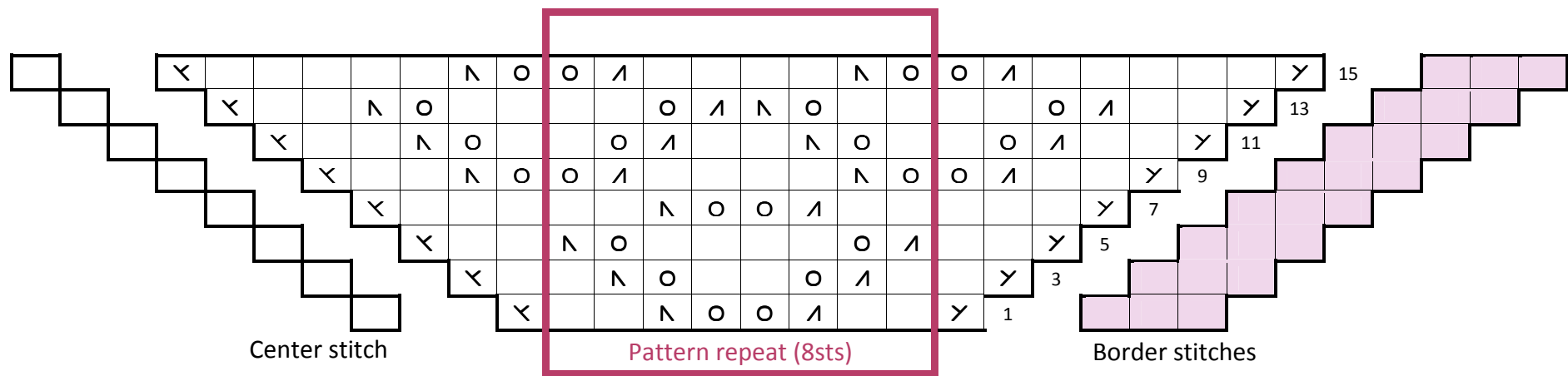
Row 15: k3, slm, M1R, k5, k2tog, yo, *yo, ssk, k4, k2tog, yo* [8 (10, 12) times], yo, ssk, k5, M1L, slm, k1, slm, M1R, k5, k2tog, yo, *yo, ssk, k4, k2tog, yo* [8 (10, 12) times], yo, ssk, k5, M1L, slm, k3

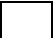
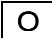



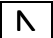
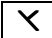
Row 16 (WS): k3, p to last three sts, k3

Work rows 1-16 a total of 3 times.
Bind off loosely.

FINISHING

Weave in all ends. Give it a good soak & pin out to dry.



 k on RS, p on WS	 yo	 k on RS, k on WS
 K2tog	 M1R	
 ssk	 M1L	

Note: In some of the RS rows you will have two consecutive yos. When you get to them on WS rows, work them as (p, ptbl).