

ICE CREAM CONES SHAWL

by Athanasia Andritsou



Level: Advanced / Adventurous Intermediate

Yarn/needles used:

Black shawl: Yarn: Dyeforwool Fine lace weight 2ply

70% Wool, 20% Silk, 10% Cashmere (Extrafine Merino Wool, Silk, Cashmere)

yardage per 100 gr: 1400 meters (1530 yards)

0.43 skeins = 601.6 meters (657.9 yards), 43 grams

Needles: 2.5 mm and 2.75 mm

Measurements: 110cm x 45cm

© 2014 Athanasia Andritsou (for personal - non commercial use only)

Pink shawl: Yarn: Lana Grossa lace weight merino 100% Merino (lace - 2ply)

Yardage per 100 gr: 800 meters (874 yards)

2.6 skeins = 1039.0 meters (1136.2 yards), 130 grams

Needles: 3.00 mm and 3.25 mm

Measurements: 145cm x 52cm

BUT: You can actually knit it with any yarn: cobweb, lace, fingering, needles according to your feeling for airy lace and gauge is of no importance.

The shape of the shawl is crescent.

The 1st stitch of both the right and the wrong sides of the shawl is always slipped purlwise with yarn held in the front.

There are 3 garter stitches in the beginning and 3 in the end of each row. These are always knit (both on the right and the wrong sides of the shawl). As mentioned above, the 1st stitch of the 3 garter stitches both on the right and the wrong sides of the shawl is always slipped purlwise with yarn held in the front.

The charts do not show the garter stitches.

The Charts have to be knitted in the following order:

Chart A: 3 times (black shawl) / 5 times (pink shawl), Chart B once, Chart C once, Chart D once, Chart E once, Chart F once and Edge Chart once.

You can modify the size of the shawl by repeating Chart A more times than indicated.

Charts are read: from right to left for the odd rows (you face the right side of the shawl) – left to right for the even rows (you face the wrong side of the shawl).

Charts show both right and wrong side rows.

The charts show (include) the yo before and after the 3 garter stitches.

There is a stitch glossary after the Edge Chart.

A) Start with a long garter tab as follows:

Using Crochet Cast On, CO 3 stitches.

Knit 53 rows, slipping first stitch of each row purlwise with yarn held in the front .

At end of the last row, turn work 90 degrees and pick up and knit 26 stitches along one long edge of work – (1 stitch in each slipped stitch along edge, skipping first stitch). Remove waste yarn from CO edge, place the resulting 3 live stitches on left needle and knit these stitches. You have now 32 stitches. Knit as follows: Knit 3, (k1,yo) 25 times, k4. You have now 57 stitches.

Or (if you don't like garter tab) Cast on 57 stitches and Purl 1 row (wrong side).

B) Continue with Chart A as follows:

3 garter sts, Chart A, 3 garter sts.

Repeat Chart A 3 or 4 or 5 or as many times as you wish.

Charts B, C, D, E, F, G and Edge Chart have to be knitted once each.

Change to needles 0.25 mm thicker after completing Chart E.

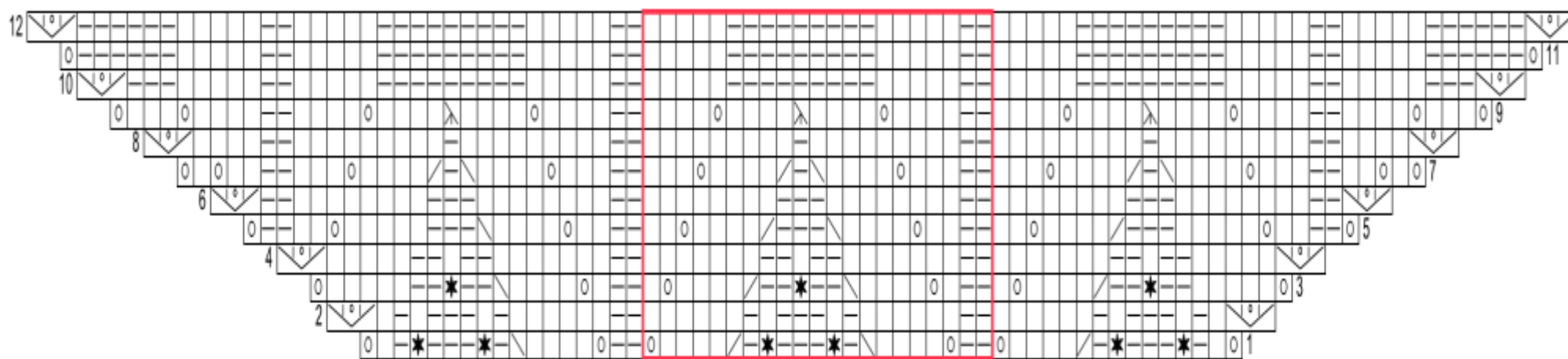
You may change to even 0.25 mm thicker needles after completing Chart G (I did so on my pink shawl, it did not feel necessary for my black one).

Bind off after row 12 of Edge Chart (on the right side) using 2 strands of yarn held together as follows:
p2, *slip both stitches back to left needle and p2tog, p1* , repeat between the * * till you have 1 stitch left.
Break yarn and draw through last stitch.

Hand wash and then block your shawl pulling every stitch between 2 yarn overs (on each side of the cable) to create a scalloped edge!

The long boring garter tab prevents the extra bulk usually formed on the top side of the crescent shawls. I did not use it for the first shawl, the pink one, and I happily came up with the idea when I was ready to knit the second one, the black one. It is worth the effort and the boredom, just remember to knit the long garter tab very loosely, or with 0.25 mm thicker needles than the body of the shawl.

Chart A



Row 1: Yo, k1, p1, nupp-7, [p3, nupp-7, p1, k2tog, k4, yo, p2, yo, k4, ssk, p1, nupp-7] twice, p3, nupp-7, p1, k1, yo.

Row 2: (P, yo, p) in 1, [p1, k1] twice, k2, p1, k1, [p6, k2, p5, [p1, k1] twice, k2, p1, k1] twice, p1, (p, yo, p) in 1.

Row 3: Yo, k5, [p2, nupp-7, p2, k2tog, k4, yo, k1, p2, k1, yo, k4, ssk] twice, p2, nupp-7, p2, k5, yo.

Row 4: (P, yo, p) in 1, p4, [p1, k2] twice, [[p7, k2] twice, p1, k2] twice, p5, (p, yo, p) in 1.

Row 5: Yo, p2, k2, yo, k5, [p3, k2tog, k4, yo, k2, p2, k2, yo, k4, ssk] twice, p3, k5, yo, k2, p2, yo.

Row 6: (P, yo, p) in 1, k2, [p8, k3, p8, k2] 3 times, (p, yo, p) in 1.

Row 7: [Yo, k1] twice, k1, p2, [k3, yo, k4, ssk, p1, k2tog, k4, yo, k3, p2] 3 times, k1, [k1, yo] twice.

Row 8: (P, yo, p) in 1, p4, k2, [[p9, k1] twice, k1] 3 times, p4, (p, yo, p) in 1.

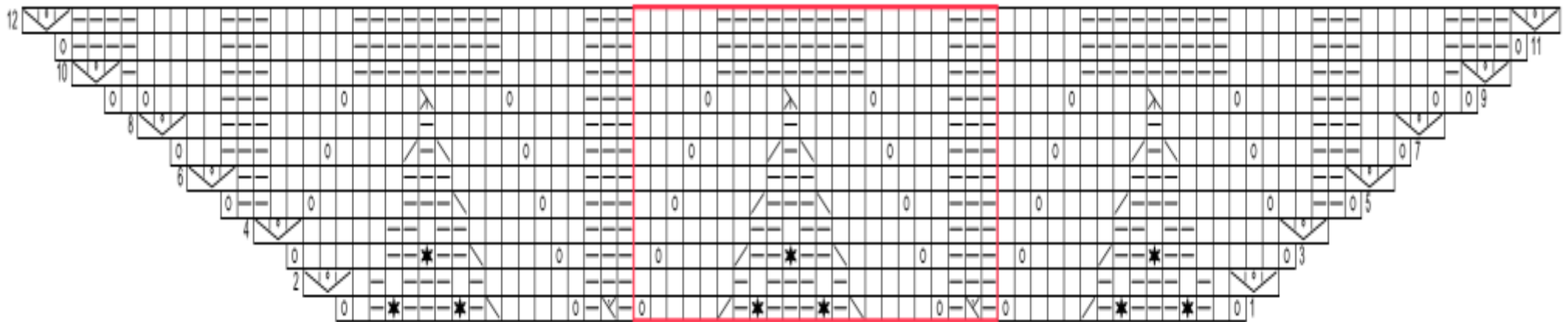
Row 9: [Yo, k3] twice, k1, p2, [k4, yo, k4, s1-k2tog-ssso, k4, yo, k4, p2] 3 times, k1, [k3, yo] twice.

Row 10: (P, yo, p) in 1, k1, [k2, p5] twice, [k7, [k2, p5] twice] 3 times, k3, (p, yo, p) in 1.

Row 11: Yo, [p6, [k5, p2] twice, p1] 4 times, p3, yo.

Row 12: (P, yo, p) in 1, [k6, [p5, k2] twice, k1] 4 times, k3, (p, yo, p) in 1.

Chart B



Row 1: Yo, k1, p1, nupp-7, [p3, nupp-7, p1, k2tog, k4, yo, p1, M1L, p1, yo, k4, ssk, p1, nupp-7] twice, p3, nupp-7, p1, k1, yo.

Row 2: (P, yo, p) in 1, [p1, k1] twice, k2, p1, k1, [p6, k3, p5, [p1, k1] twice, k2, p1, k1] twice, p1, (p, yo, p) in 1.

Row 3: Yo, k5, [p2, nupp-7, p2, k2tog, k4, yo, k1, p3, k1, yo, k4, ssk] twice, p2, nupp-7, p2, k5, yo.

Row 4: (P, yo, p) in 1, p4, [p1, k2] twice, [p7, k3, p6, [p1, k2] twice] twice, p5, (p, yo, p) in 1.

Row 5: Yo, p2, k2, yo, k5, [p3, k2tog, k4, yo, k2, p3, k2, yo, k4, ssk] twice, p3, k5, yo, k2, p2, yo.

Row 6: (P, yo, p) in 1, [k2, p8, k1] 6 times, k1, (p, yo, p) in 1.

Row 7: Yo, k2, [p3, k3, yo, k4, ssk, p1, k2tog, k4, yo, k3] 3 times, p3, k2, yo.

Row 8: (P, yo, p) in 1, p2, k3, [[p9, k1] twice, k2] 3 times, p2, (p, yo, p) in 1.

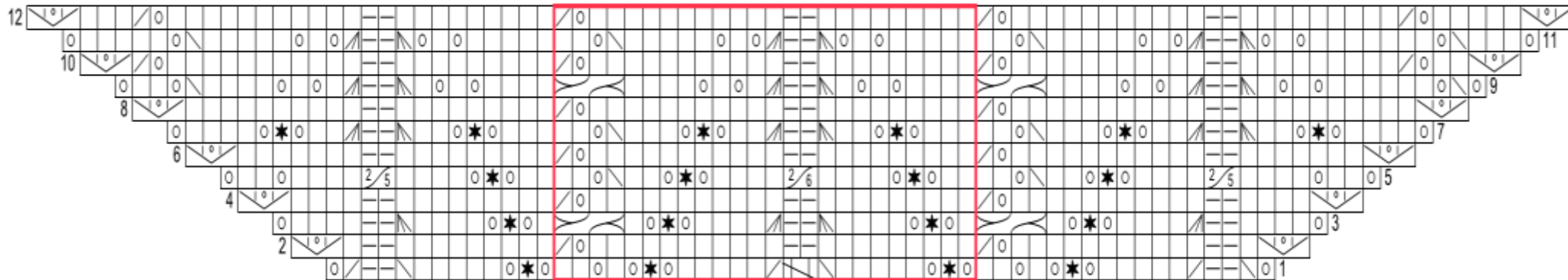
Row 9: Yo, k1, yo, [k4, p3, k4, yo, k4, s1-k2tog-ssso, k4, yo] 3 times, k4, p3, k4, yo, k1, yo.

Row 10: (P, yo, p) in 1, k1, [[p5, k3] twice, k6] 3 times, p5, k3, p5, k1, (p, yo, p) in 1.

Row 11: Yo, p1, [[p3, k5] twice, p6] 3 times, p3, [k5, p3] twice, p1, yo.

Row 12: (P, yo, p) in 1, k1, [[k3, p5] twice, k6] 3 times, k3, [p5, k3] twice, k1, (p, yo, p) in 1.

Chart C



Row 1: Yo, ssk, p2, k2tog, k5, yo, nupp-7, [yo, k1] twice, k1, yo, nupp-7, yo, k5, ssk, Decrease 3 Stitches to 2 stitches, k2tog, k5, yo, nupp-7, [yo, k1] twice, k1, yo, nupp-7, yo, k5, ssk, p2, k2tog, yo.

Row 2: (P, yo, p) in 1, p1, k2, [p9, p2tog, yo, p11, k2] twice, p1, (p, yo, p) in 1.

Row 3: Yo, k4, [p2, k3tog, k4, yo, nupp-7, yo, k1, 2/2 RC, k1, yo, nupp-7, yo, k4, sssk] twice, p2, k4, yo.

Row 4: (P, yo, p) in 1, p4, k2, [p9, p2tog, yo, p11, k2] twice, p4, (p, yo, p) in 1.

Row 5: [Yo, k2] twice, k2, Make 2 stitches from 5 stitches, k4, yo, nupp-7, yo, k2, ssk, yo, k4, yo, nupp-7, yo, k4, Make 2 stitches from 6 stitches, k4, yo, nupp-7, yo, k2, ssk, yo, k4, yo, nupp-7, yo, k4, Make 2 stitches from 5 stitches, k2, [k2, yo] twice.

Row 6: (P, yo, p) in 1, p7, k2, [p9, p2tog, yo, p11, k2] twice, p7, (p, yo, p) in 1.

Row 7: Yo, [k4, yo, nupp-7, yo, k2, sssk, p2, k3tog, k2, yo, nupp-7, yo, k3, ssk, yo, k1] twice, k4, yo, nupp-7, yo, k2, sssk, p2, k3tog, k2, yo, nupp-7, yo, k4, yo.

Row 8: (P, yo, p) in 1, [p10, k2, p9, p2tog, yo, p1] twice, p10, k2, p10, (p, yo, p) in 1.

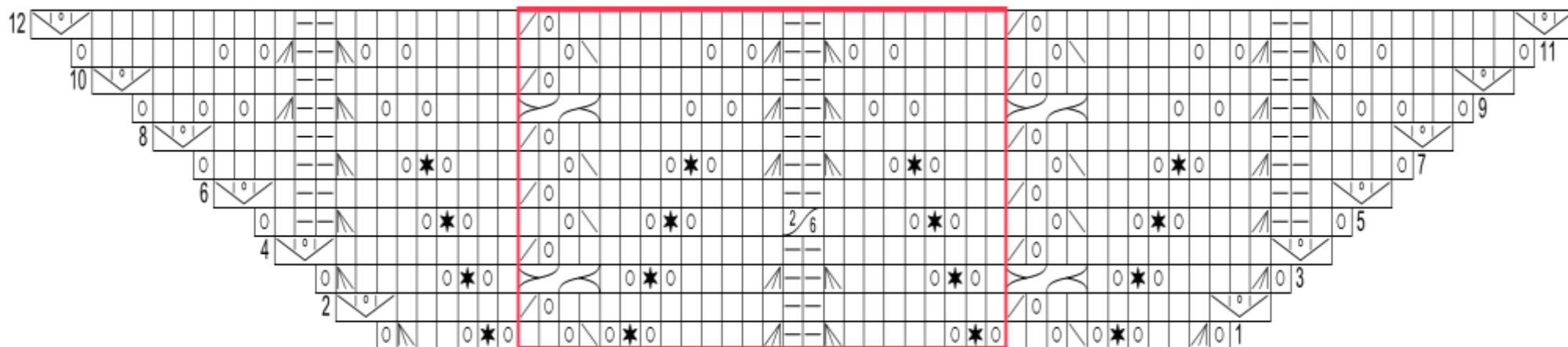
Row 9: Yo, ssk, yo, k5, [k1, [yo, k1] twice, sssk, p2, k3tog, [k1, yo] twice, k4, 2/2 RC, k3] twice, k1, [yo, k1] twice, sssk, p2, k3tog, [k1, yo] twice, k4, ssk, yo, k2, yo.

Row 10: (P, yo, p) in 1, p2tog, yo, [p11, k2, p9, p2tog, yo] 3 times, p2, (p, yo, p) in 1.

Row 11: Yo, k3, ssk, yo, [k6, [k1, yo] twice, sssk, p2, k3tog, [yo, k1] twice, k4, ssk, yo] 3 times, k5, yo.

Row 12: (P, yo, p) in 1, p3, p2tog, yo, [p11, k2, p9, p2tog, yo] 3 times, p5, (p, yo, p) in 1.

Chart D



Row 1: Yo, k3tog, k2, yo, nupp-7, yo, ssk, yo, k2, yo, nupp-7, yo, k5, sssk, p2, k3tog, k5, yo, nupp-7, yo, ssk, yo, k2, yo, nupp-7, yo, k2, sssk, yo.

Row 2: (P, yo, p) in 1, p6, p2tog, yo, p11, k2, p9, p2tog, yo, p8, (p, yo, p) in 1.

Row 3: Yo, k3tog, k4, yo, nupp-7, yo, k1, 2/2 RC, k1, yo, nupp-7, yo, k4, sssk, p2, k3tog, k4, yo, nupp-7, yo, k1, 2/2 RC, k1, yo, nupp-7, yo, k4, sssk, yo.

Row 4: (P, yo, p) in 1, p9, p2tog, yo, p11, k2, p9, p2tog, yo, p11, (p, yo, p) in 1.

Row 5: Yo, k1, p2, k3tog, k3, yo, nupp-7, yo, k2, ssk, yo, k4, yo, nupp-7, yo, k4, Make 2 stitches from 6 stitches, k4, yo, nupp-7, yo, k2, ssk, yo, k4, yo, nupp-7, yo, k3, sssk, p2, k1, yo.

Row 6: (P, yo, p) in 1, p1, k2, [p9, p2tog, yo, p11, k2] twice, p1, (p, yo, p) in 1.

Row 7: Yo, k4, [p2, k3tog, k2, yo, nupp-7, yo, k3, ssk, yo, k5, yo, nupp-7, yo, k2, sssk] twice, p2, k4, yo.

Row 8: (P, yo, p) in 1, p4, k2, [p9, p2tog, yo, p11, k2] twice, p4, (p, yo, p) in 1.

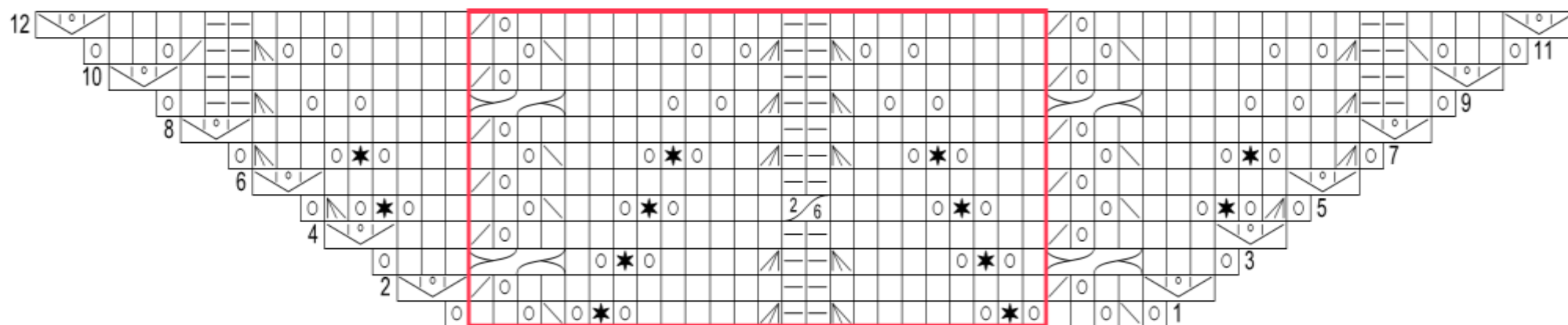
Row 9: Yo, k1, [k1, [yo, k1] twice, sssk, p2, k3tog, [k1, yo] twice, k4, 2/2 RC, k3] twice, k1, [yo, k1] twice, sssk, p2, k3tog, [k1, yo] twice, k2, yo.

Row 10: (P, yo, p) in 1, p7, k2, [p9, p2tog, yo, p11, k2] twice, p7, (p, yo, p) in 1.

Row 11: Yo, [k5, [k1, yo] twice, sssk, p2, k3tog, [yo, k1] twice, k4, ssk, yo, k1] twice, k5, [k1, yo] twice, sssk, p2, k3tog, [yo, k1] twice, k5, yo.

Row 12: (P, yo, p) in 1, [p10, k2, p9, p2tog, yo, p1] twice, p10, k2, p10, (p, yo, p) in 1.

Chart E



Row 1: Yo, ssk, yo, k2, yo, nupp-7, yo, k5, sssk, p2, k3tog, k5, yo, nupp-7, yo, ssk, yo, k2, yo.

Row 2: (P, yo, p) in 1, p2tog, yo, p11, k2, p9, p2tog, yo, p2, (p, yo, p) in 1.

Row 3: Yo, k3, 2/2 RC, k1, yo, nupp-7, yo, k4, sssk, p2, k3tog, k4, yo, nupp-7, yo, k1, 2/2 RC, k3, yo.

Row 4: (P, yo, p) in 1, p3, p2tog, yo, p11, k2, p9, p2tog, yo, p5, (p, yo, p) in 1.

Row 5: Yo, k3tog, yo, nupp-7, yo, k2, ssk, yo, k4, yo, nupp-7, yo, k4, Make 2 stitches from 6 stitches, k4, yo, nupp-7, yo, k2, ssk, yo, k4, yo, nupp-7, yo, sssk, yo.

Row 6: (P, yo, p) in 1, p6, p2tog, yo, p11, k2, p9, p2tog, yo, p8, (p, yo, p) in 1.

Row 7: Yo, k3tog, k2, yo, nupp-7, yo, k3, ssk, yo, k5, yo, nupp-7, yo, k2, sssk, p2, k3tog, k2, yo, nupp-7, yo, k3, ssk, yo, k5, yo, nupp-7, yo, k2, sssk, yo.

Row 8: (P, yo, p) in 1, p9, p2tog, yo, p11, k2, p9, p2tog, yo, p11, (p, yo, p) in 1.

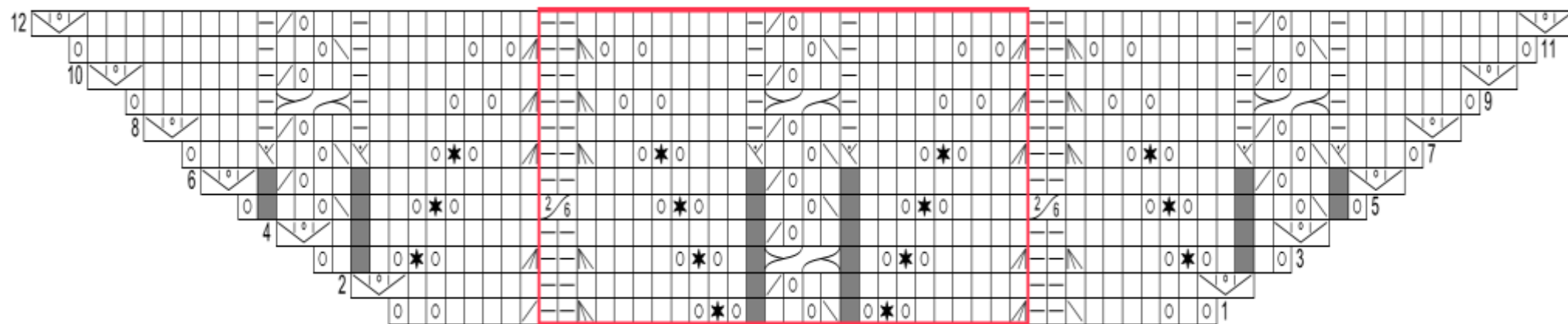
Row 9: Yo, k1, [p2, k3tog, [k1, yo] twice, k4, 2/2 RC, k4, [yo, k1] twice, sssk] twice, p2, k1, yo.

Row 10: (P, yo, p) in 1, p1, k2, [p9, p2tog, yo, p11, k2] twice, p1, (p, yo, p) in 1.

Row 11: Yo, k2, yo, ssk, [p2, k3tog, [yo, k1] twice, k4, ssk, yo, k6, [k1, yo] twice, sssk] twice, p2, k2tog, yo, k2, yo.

Row 12: (P, yo, p) in 1, p4, k2, [p9, p2tog, yo, p11, k2] twice, p4, (p, yo, p) in 1.

Chart F



Row 1: Yo, k1, yo, k4, ssk, p2, k3tog, k5, yo, nupp-7, yo, ssk, yo, k2, yo, nupp-7, yo, k5, sssk, p2, k2tog, k4, yo, k1, yo.

Row 2: (P, yo, p) in 1, p7, k2, p9, p2tog, yo, p11, k2, p7, (p, yo, p) in 1.

Row 3: Yo, k2, yo, nupp-7, yo, k4, sssk, p2, k3tog, k4, yo, nupp-7, yo, k1, 2/2 RC, k1, yo, nupp-7, yo, k4, sssk, p2, k3tog, k4, yo, nupp-7, yo, k2, yo.

Row 4: (P, yo, p) in 1, p10, k2, p9, p2tog, yo, p11, k2, p10, (p, yo, p) in 1.

Row 5: Yo, ssk, yo, [k4, yo, nupp-7, yo, k4, Make 2 stitches from 6 stitches, k4, yo, nupp-7, yo, k2, ssk, yo] twice, k2, yo.

Row 6: (P, yo, p) in 1, p2tog, yo, [p11, k2, p9, p2tog, yo] twice, p2, (p, yo, p) in 1.

Row 7: Yo, [k3, M1LP, ssk, yo, k2, M1LP, k3, yo, nupp-7, yo, k2, sssk, p2, k3tog, k2, yo, nupp-7, yo] twice, k3, M1LP, ssk, yo, k2, M1LP, k3, yo.

Row 8: (P, yo, p) in 1, p3, k1, p2tog, yo, p2, k1, [p9, k2, p9, k1, p2tog, yo, p2, k1] twice, p3, (p, yo, p) in 1.

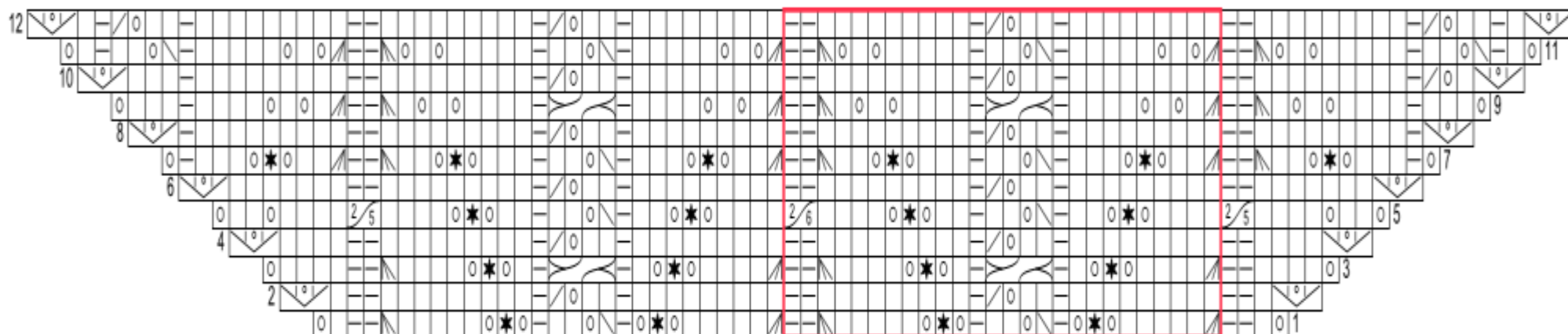
Row 9: Yo, k6, p1, 2/2 RC, p1, k3, [k1, [yo, k1] twice, sssk, p2, k3tog, [k1, yo] twice, k4, p1, 2/2 RC, p1, k3] twice, k3, yo.

Row 10: (P, yo, p) in 1, p6, k1, p2tog, yo, p2, k1, [p9, k2, p9, k1, p2tog, yo, p2, k1] twice, p6, (p, yo, p) in 1.

Row 11: Yo, k4, [k5, p1, ssk, yo, k2, p1, k4, [k1, yo] twice, sssk, p2, k3tog, yo, k1, yo] twice, k5, p1, ssk, yo, k2, p1, k9, yo.

Row 12: (P, yo, p) in 1, [p9, k1, p2tog, yo, p2, k1, p9, k2] twice, p9, k1, p2tog, yo, p2, k1, p9, (p, yo, p) in 1.

Chart G



Row 1: Yo, k1, [p2, k3tog, k5, yo, nupp-7, yo, p1, ssk, yo, k2, p1, yo, nupp-7, yo, k5, sssk] twice, p2, k1, yo.

Row 2: (P, yo, p) in 1, p1, k2, [p9, k1, p2tog, yo, p2, k1, p9, k2] twice, p1, (p, yo, p) in 1.

Row 3: Yo, k4, [p2, k3tog, k4, yo, nupp-7, yo, k1, p1, 2/2 RC, p1, k1, yo, nupp-7, yo, k4, sssk] twice, p2, k4, yo.

Row 4: (P, yo, p) in 1, p4, k2, [p9, k1, p2tog, yo, p2, k1, p9, k2] twice, p4, (p, yo, p) in 1.

Row 5: [Yo, k2] twice, k2, Make 2 stitches from 5 stitches, k4, yo, nupp-7, yo, k2, p1, ssk, yo, k2, p1, k2, yo, nupp-7, yo, k4, Make 2 stitches from 6 stitches, k4, yo, nupp-7, yo, k2, p1, ssk, yo, k2, p1, k2, yo, nupp-7, yo, k4, Make 2 stitches from 5 stitches, k2, [k2, yo] twice.

Row 6: (P, yo, p) in 1, p7, k2, [p9, k1, p2tog, yo, p2, k1, p9, k2] twice, p7, (p, yo, p) in 1.

Row 7: Yo, p1, k3, yo, nupp-7, yo, k2, sssk, p2, k3tog, [k2, yo, nupp-7, yo, k3, p1, ssk, yo, k2, p1, k3, yo, nupp-7, yo, k2, sssk, p2, k3tog] twice, k2, yo, nupp-7, yo, k3, p1, yo.

Row 8: (P, yo, p) in 1, k1, [p9, k2, p9, k1, p2tog, yo, p2, k1] twice, p9, k2, p9, k1, (p, yo, p) in 1.

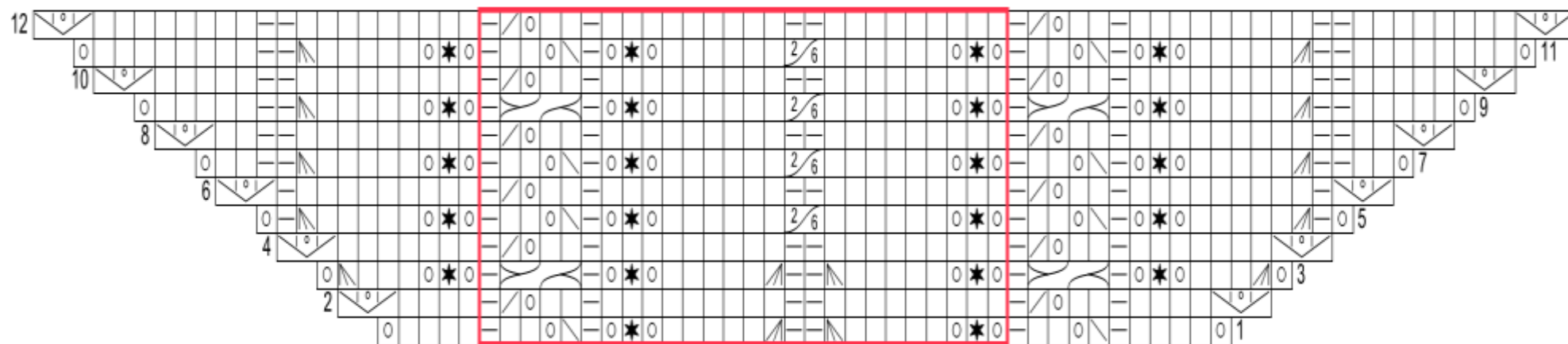
Row 9: Yo, k3, p1, k3, [k1, [yo, k1] twice, sssk, p2, k3tog, [k1, yo] twice, k4, p1, 2/2 RC, p1, k3] twice, k1, [yo, k1] twice, sssk, p2, k3tog, [k1, yo] twice, k4, p1, k3, yo.

Row 10: (P, yo, p) in 1, p1, [p2, [k1, p9, k1] twice, p2tog, yo] 3 times, p1, (p, yo, p) in 1.

Row 11: Yo, k1, p1, ssk, yo, k2, p1, [k4, [k1, yo] twice, sssk, p2, k3tog, [yo, k1] twice, k4, p1, ssk, yo, k2, p1] 3 times, k1, yo.

Row 12: (P, yo, p) in 1, p1, k1, p2tog, yo, p2, k1, [p9, k2, p9, k1, p2tog, yo, p2, k1] 3 times, p1, (p, yo, p) in 1.

Edge Chart



Row 1: Yo, k4, p1, ssk, yo, k2, p1, yo, nupp-7, yo, k5, sssk, p2, k3tog, k5, yo, nupp-7, yo, p1, ssk, yo, k2, p1, k4, yo.

Row 2: (P, yo, p) in 1, p4, k1, p2tog, yo, p2, [k1, p9, k1] twice, p2tog, yo, p2, k1, p4, (p, yo, p) in 1.

Row 3: Yo, k3tog, k3, yo, nupp-7, yo, p1, 2/2 RC, p1, yo, nupp-7, yo, k5, sssk, p2, k3tog, k5, yo, nupp-7, yo, p1, 2/2 RC, p1, yo, nupp-7, yo, k3, sssk, yo.

Row 4: (P, yo, p) in 1, p7, k1, p2tog, yo, p2, [k1, p9, k1] twice, p2tog, yo, p2, k1, p7, (p, yo, p) in 1.

Row 5: Yo, p1, k3tog, k5, yo, nupp-7, yo, p1, ssk, yo, k2, p1, yo, nupp-7, yo, k6, Make 2 stitches from 6 stitches, k6, yo, nupp-7, yo, p1, ssk, yo, k2, p1, yo, nupp-7, yo, k5, sssk, p1, yo.

Row 6: (P, yo, p) in 1, [k1, p9, k1, p2tog, yo, p2, k1, p9, k1] twice, (p, yo, p) in 1.

Row 7: Yo, k2, p2, k3tog, k5, yo, nupp-7, yo, p1, ssk, yo, k2, p1, yo, nupp-7, yo, k6, Make 2 stitches from 6 stitches, k6, yo, nupp-7, yo, p1, ssk, yo, k2, p1, yo, nupp-7, yo, k5, sssk, p2, k2, yo.

Row 8: (P, yo, p) in 1, p2, k2, [p9, k1, p2tog, yo, p2, k1, p9, k2] twice, p2, (p, yo, p) in 1.

Row 9: Yo, k5, p2, k3tog, k5, yo, nupp-7, yo, p1, 2/2 RC, p1, yo, nupp-7, yo, k6, Make 2 stitches from 6 stitches, k6, yo, nupp-7, yo, p1, 2/2 RC, p1, yo, nupp-7, yo, k5, sssk, p2, k5, yo.

Row 10: (P, yo, p) in 1, p5, k2, [p9, k1, p2tog, yo, p2, k1, p9, k2] twice, p5, (p, yo, p) in 1.

Row 11: Yo, k8, p2, k3tog, k5, yo, nupp-7, yo, p1, ssk, yo, k2, p1, yo, nupp-7, yo, k6, Make 2 stitches from 6 stitches, k6, yo, nupp-7, yo, p1, ssk, yo, k2, p1, yo, nupp-7, yo, k5, sssk, p2, k8, yo.

Row 12: (P, yo, p) in 1, p8, k2, [p9, k1, p2tog, yo, p2, k1, p9, k2] twice, p8, (p, yo, p) in 1.

Stitch Glossary



no stitch



RS: k: knit - WS: p: purl



RS: p: purl - WS: k: knit



yo: yarn over



WS (p,yo,p) in 1: On the WS: purl, leaving the stitch on the needle, yarn over, and then purl into the same stitch.



RS: K2tog: Knit 2 stitches together – WS: p2tog: purl 2 stitches together.



ssk: Slip 2 stitches knitwise, then knit slipped stitches together - or s1k1psso: slip 1 stitch, knit 1 stitch, pass slipped stitch over.



s1-k2tog-psso: Slip one stitch knitwise, knit 2 stitches together, pass slipped stitch over.



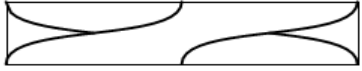
k3tog: Knit 3 stitches together.



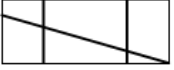
sssk: Slip 3 stitches knitwise, then knit slipped stitches together or s2k1psso: slip 2 stitches (not together), knit 1 stitch, pass slipped stitches over.



M1: From the front, with the left needle, lift the horizontal strand between the stitch already on the right needle and the stitch you are about to knit on the left needle. Purl through the back loop of this strand.



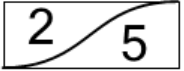
Slip 2 stitches to cable needle and hold in back; k2; k2 from cable needle.



Decrease 3 Stitches to 2 stitches: Slip 1 stitch, knit 2 stitches (not together), pass slipped stitch over.



Make 2 stitches from 6 stitches: K6tog from the front loops and without dropping them from the left needle knit them again from the back loops, drop them from the needle.



Make 2 stitches from 5 stitches: K5tog from the front loops and without dropping them from the left needle knit them again from the back loops, drop them from the needle.



Nupp 7: Knit, leaving the stitch on the needle, then yarn over, knit, yarn over, knit, yarn over, and then knit (7 stitches total) into the same stitch. On next row, work (purl) all 7 stitches together as one.

How to make the 6 sts to 2 sts possible:

On the wrong side row, before you have to perform it, you can simply knit those 6 stitches very loosely, so that their loops are big enough for your needles to go through.

Another idea would be, again on the previous row (wrong side), to put 2-3 yarn overs evenly spread among these 6 sts, that is {p,p,yo,k,k,yo,p,p} or {p,yo,p,k,yo,k,p,yo,p}, then on the row with the 6 to 2, to let these extra yarn overs drop and this extra yarn makes the loops of the 6 stitches wider, and then to insert the needle with no problem. Now all this depends on the way each one knits, but also on the elasticity of the yarn.

While knitting the pink shawl I came up with the second way, adding 2 extra yarn overs, that I dropped on the RS.

On the black shawl it was not necessary, I just tried to remember to knit the previous row more loosely than my normal gauge would be.